

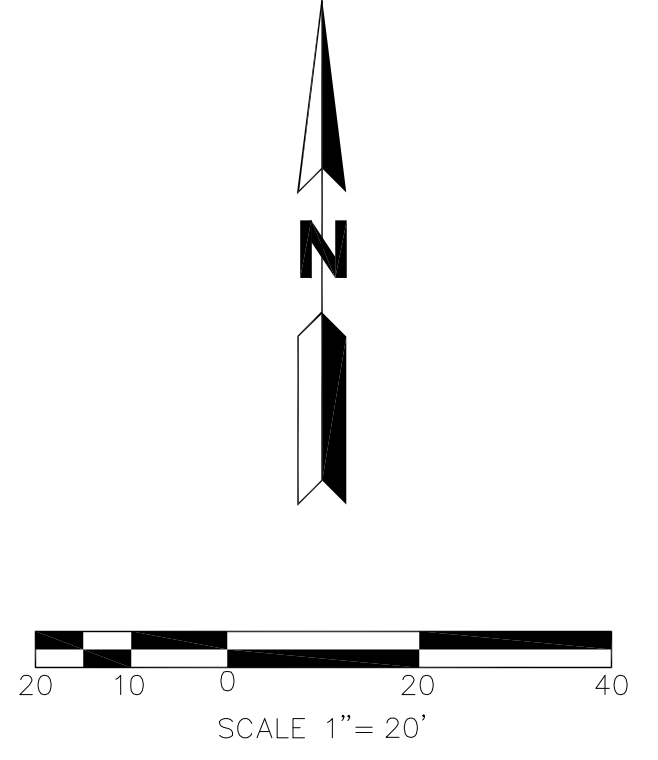
MATCH LINE  
 SEE SHEET C2

**GENERAL NOTES:**

- CONTRACTOR TO VERIFY LOCATION OF EXISTING TUNNELS AND UTILITIES; NOTIFY OWNER'S REPRESENTATIVE AND UNIVERSITY OF DISCREPANCIES.
- WHERE FENCE IS TO BE PLACED ON BRICK WALK, CORE DRILL SLEEVE HOLE AND GROUT ANNULAR SPACE. REPLACE BRICK TO EXISTING CONDITION IF DAMAGED TO OWNER'S SATISFACTION.
- ALL SLEEVES FOR POSTS TO BE CORE-DRILLED.
- FENCE ALIGNMENT IS TO AVOID ALL EXISTING BOLLARDS EXCEPT THE TWO NOTED TO BE REMOVED. CONTACT OWNER'S REPRESENTATIVE IF CONFLICT EXISTS. SURFACE UNDER REMOVED BOLLARDS TO BE REPAIRED SO AS TO MATCH AND BLEND WITH SURROUNDING AREA.
- REMOVE EXISTING ROAD SIGNS IF IN PATH OF OR OBSTRUCTED BY PROPOSED FENCE. COORDINATE REPLACEMENT LOCATION WITH CAMPUS LANDSCAPE ARCHITECT.
- 4" MAXIMUM SPACING BETWEEN BUILDING OR EXISTING FENCE AND ADJACENT TO PROPOSED FENCE POLES.
- SAWCUT EXISTING BRICK OR CONCRETE AT MONUMENTS TO ACCOMMODATE FOOTING. REPLACE EXISTING BRICK OR CONCRETE THAT HAS BEEN DISTURBED UP TO MONUMENT.
- FIELD VERIFY ALL FENCE POST AND MONUMENT LOCATIONS WITH CAMPUS LANDSCAPE ARCHITECT PRIOR TO CONSTRUCTION.
- FENCING TO BE PLACED LEVEL, HORIZONTALLY. STEP-DOWN SECTION WHEN MAXIMUM HEIGHT ABOVE GRADE EXCEEDS 4". PROVIDE SUBMITTAL OF PROPOSED POLE AND FENCE LAYOUT INCLUDING STEP-DOWN LOCATIONS.
- RE: STRUCTURAL DRAWINGS FOR MONUMENT FENCE POST AND SLEEVE DETAILS.
- BASE MAPPING PROVIDED BY CU. CONTRACTOR SHALL FIELD VERIFY ALL EXISTING CONDITIONS PRIOR TO CONSTRUCTION.
- RAISE ALL UTILITIES, MANHOLES, INLETS, VALVES, BOXES, ETC. IN AREAS WHERE GRADES ARE MODIFIED.
- NORTHING/EASTING LAYOUT COORDINATES ARE APPROXIMATE AND ARE TO BE FIELD VERIFIED.
- REMOVE EXIST. CONCRETE SIDEWALK AND ASPHALT. REPLACE WITH STONE PAVERS TO MATCH EXISTING TO WEST. COORDINATE WITH CU LANDSCAPE ARCHITECT. VERIFY UTILITY AND TUNNEL ELEVATIONS FOR NEW BRICK PLACEMENT PRIOR TO CONSTRUCTION.
- THE BASIS OF CONTROL IS FROM CU MAPPING AND DOES NOT COINCIDE WITH CU-BOULDER "SURVEY CONTROL DATUM"  
 USE =  
 N: -3984.92  
 E: 331.17  
 SE CORNER EXIST. BLDG  
 N: -3788.08  
 E: 331.17  
 NE CORNER EXIST. BLDG  
 \*VERIFY CONTROL RELATED TO FENCE LAYOUT PRIOR TO CONSTRUCTION.
- SEE DIVISION 1 SPECIFICATIONS FOR REQUIRED "HOT WORK PERMITS."
- SEE DIVISION 1 SPECIFICATIONS FOR REQUIREMENTS TO NOT BLOCK ACCESS TO FIRE HYDRANTS, EMERGENCY ACCESS, AND BUILDING EXITING/EGRESS.
- SEE DIVISION 1 SPECIFICATIONS FOR CONTRACTOR STAGING AND PARKING.

**LEGEND**

ST	CURB & GUTTER
SS	STORM SEWER
W	STORM MANHOLE
OHE	STORM INLET
E	FLARED END SECTION
G	SANITARY SEWER
T	SANITARY MANHOLE
CT	CLEAN OUT
G	WATER LINE
W	WATER VALVE
W	FIRE HYDRANT
W	WATER METER
W	IRRIGATION CONTROL
W	OVERHEAD ELECTRIC
W	ELECTRIC LINE
W	LIGHT POLE
W	POWER POLE
W	ELECTRIC METER
W	TELEPHONE LINE
W	TELEPHONE PEDESTAL
W	CABLE TV
W	GAS LINE
W	MONITOR WELL
W	SIGN
W	DECIDUOUS TREE
W	EVERGREEN TREE
W	HANDICAP RAMPS
W	TOP OF CURB
W	BACK OF CURB
W	CENTERLINE

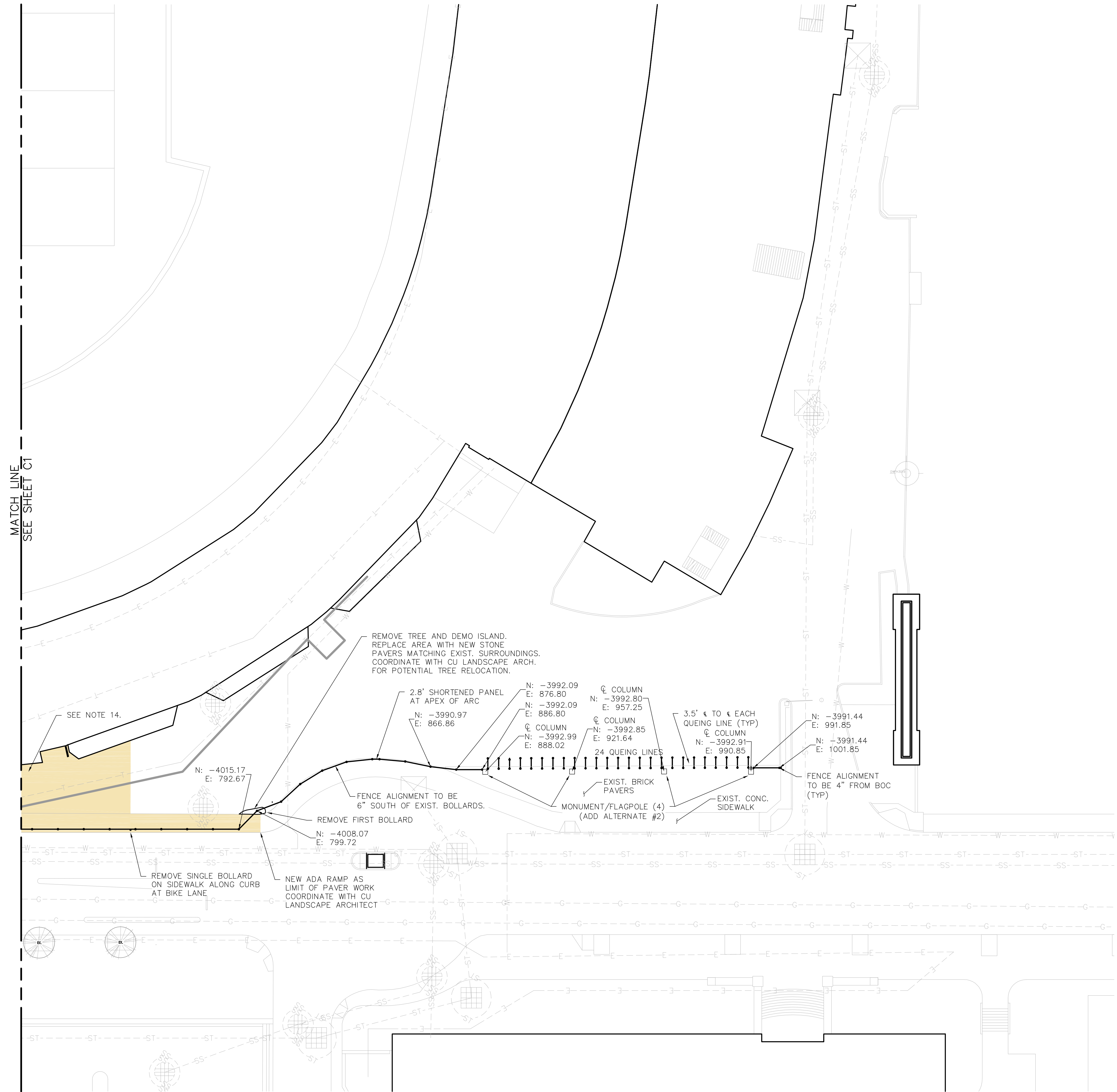


No.	Description of Revisions	Date	Name
1	SUBMIT FOR OWNER REVIEW	8/8/2008	JY
2	RELEASE FOR CONSTRUCTION	9/17/2008	JY

Date:	AUGUST 20, 2008
Job Number:	20769.C.01
Design By:	JY
Drawn By:	LMS
Checked By:	BW

Sheet Number:

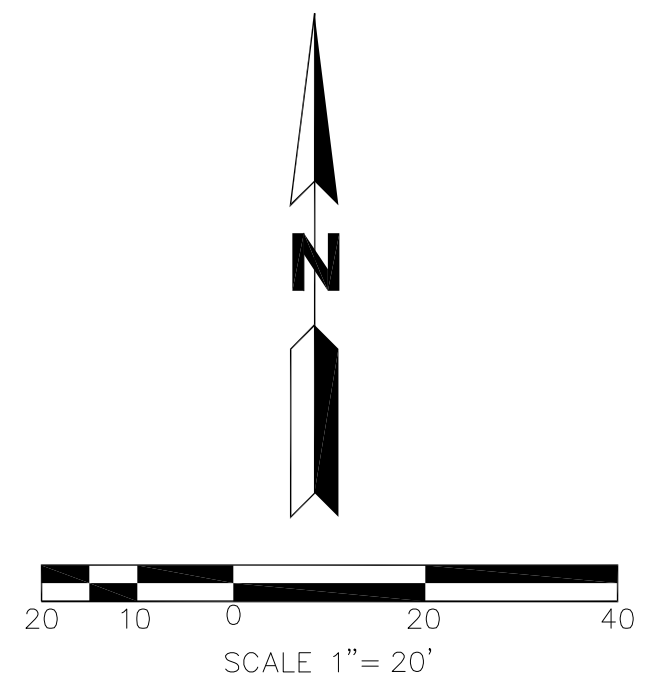
**C1**



- GENERAL NOTES:**
- CONTRACTOR TO VERIFY LOCATION OF EXISTING TUNNELS AND UTILITIES; NOTIFY OWNER'S REPRESENTATIVE OF DISCREPANCIES.
  - WHERE FENCE IS TO BE PLACED ON BRICK WALK, CORE DRILL SLEEVE HOLE AND GROUT ANNULAR SPACE. REPLACE BRICK TO EXISTING CONDITION IF DAMAGED TO OWNER'S SATISFACTION.
  - ALL SLEEVES FOR POSTS TO BE CORE-DRILLED.
  - FENCE ALIGNMENT IS TO AVOID ALL EXISTING BOLLARDS EXCEPT THE TWO NOTED TO BE REMOVED. CONTACT OWNER'S REPRESENTATIVE IF CONFLICT EXISTS. SURFACE UNDER REMOVED BOLLARDS TO BE REPAIRED SO AS TO MATCH AND BLEND WITH SURROUNDING AREA.
  - REMOVE EXISTING ROAD SIGNS IF IN PATH OF OR OBSTRUCTED BY PROPOSED FENCE. COORDINATE REPLACEMENT LOCATION WITH CAMPUS LANDSCAPE ARCHITECT.
  - 4" MAXIMUM SPACING BETWEEN BUILDING OR EXISTING FENCE AND ADJACENT TO PROPOSED FENCE POLES.
  - SAWCUT EXISTING BRICK OR CONCRETE AT MONUMENTS TO ACCOMMODATE FOOTING. REPLACE EXISTING BRICK OR CONCRETE THAT HAS BEEN DISTURBED UP TO MONUMENT.
  - FIELD VERIFY ALL FENCE POST AND MONUMENT LOCATIONS WITH CAMPUS LANDSCAPE ARCHITECT PRIOR TO CONSTRUCTION.
  - FENCING TO BE PLACED LEVEL, HORIZONTALLY. STEP-DOWN SECTION WHEN MAXIMUM HEIGHT ABOVE GRADE EXCEEDS 4". PROVIDE SUBMITTAL OF PROPOSED POLE AND FENCE LAYOUT INCLUDING STEP-DOWN LOCATIONS.
  - RE: STRUCTURAL DRAWINGS FOR MONUMENT FENCE POST AND SLEEVE DETAILS.
  - BASE MAPPING PROVIDED BY CU. CONTRACTOR SHALL FIELD VERIFY ALL EXISTING CONDITIONS PRIOR TO CONSTRUCTION.
  - RAISE ALL UTILITIES, MANHOLES, INLETS, VALVES, BOXES, ETC. IN AREAS WHERE GRADES ARE MODIFIED.
  - NORTHING/EASTING LAYOUT COORDINATES ARE APPROXIMATE AND ARE TO BE FIELD VERIFIED.
  - REMOVE EXIST. CONCRETE SIDEWALK AND ASPHALT, REPLACE WITH STONE PAVERS TO MATCH EXISTING TO WEST. COORDINATE WITH CU LANDSCAPE ARCHITECT. VERIFY UTILITY AND TUNNEL ELEVATIONS FOR NEW BRICK PLACEMENT PRIOR TO CONSTRUCTION.
  - SEE DIVISION 1 SPECIFICATIONS FOR REQUIRED "HOT WORK PERMITS."
  - SEE DIVISION 1 SPECIFICATIONS FOR REQUIREMENTS TO NOT BLOCK ACCESS TO FIRE HYDRANTS, EMERGENCY ACCESS, AND BUILDING EXITING/EGRESS.
  - SEE DIVISION 1 SPECIFICATIONS FOR CONTRACTOR STAGING AND PARKING.

**LEGEND**

ST	CURB & GUTTER
SS	STORM SEWER
W	STORM MANHOLE
OHE	STORM INLET
E	FLARED END SECTION
CT	SANITARY SEWER
G	SANITARY MANHOLE
W	CLEAN OUT
T	WATER LINE
CT	WATER VALVE
G	FIRE HYDRANT
W	WATER METER
W	IRRIGATION CONTROL
W	OVERHEAD ELECTRIC
W	ELECTRIC LINE
W	LIGHT POLE
W	POWER POLE
W	ELECTRIC METER
W	TELEPHONE LINE
W	TELEPHONE PEDESTAL
W	CABLE TV
W	GAS LINE
W	MONITOR WELL
W	SIGN
W	DECIDUOUS TREE
W	EVERGREEN TREE
W	HANDICAP RAMPS
W	TOP OF CURB
W	BACK OF CURB
W	CENTERLINE



No.	Description of Revisions	Date	Name
1	SUBMIT FOR OWNER REVIEW	8/8/2008	JY
2	RELEASE FOR CONSTRUCTION	9/17/2008	JY

Date:	AUGUST 20, 2008
Job Number:	20769.C.01
Design By:	JY
Drawn By:	LMS
Checked By:	BW

Sheet Number:

**C2**

# DESIGN CRITERIA

1. CODES AND STANDARDS USED IN DESIGN:
- A. INTERNATIONAL BUILDING CODE 2006
  - B. CONCRETE DESIGN: ACI 318-05.
  - C. WIND DESIGN CRITERIA:
    - 110 MPH
    - EXPOSURE 'C'

## SECTION 1 - GENERAL REQUIREMENTS

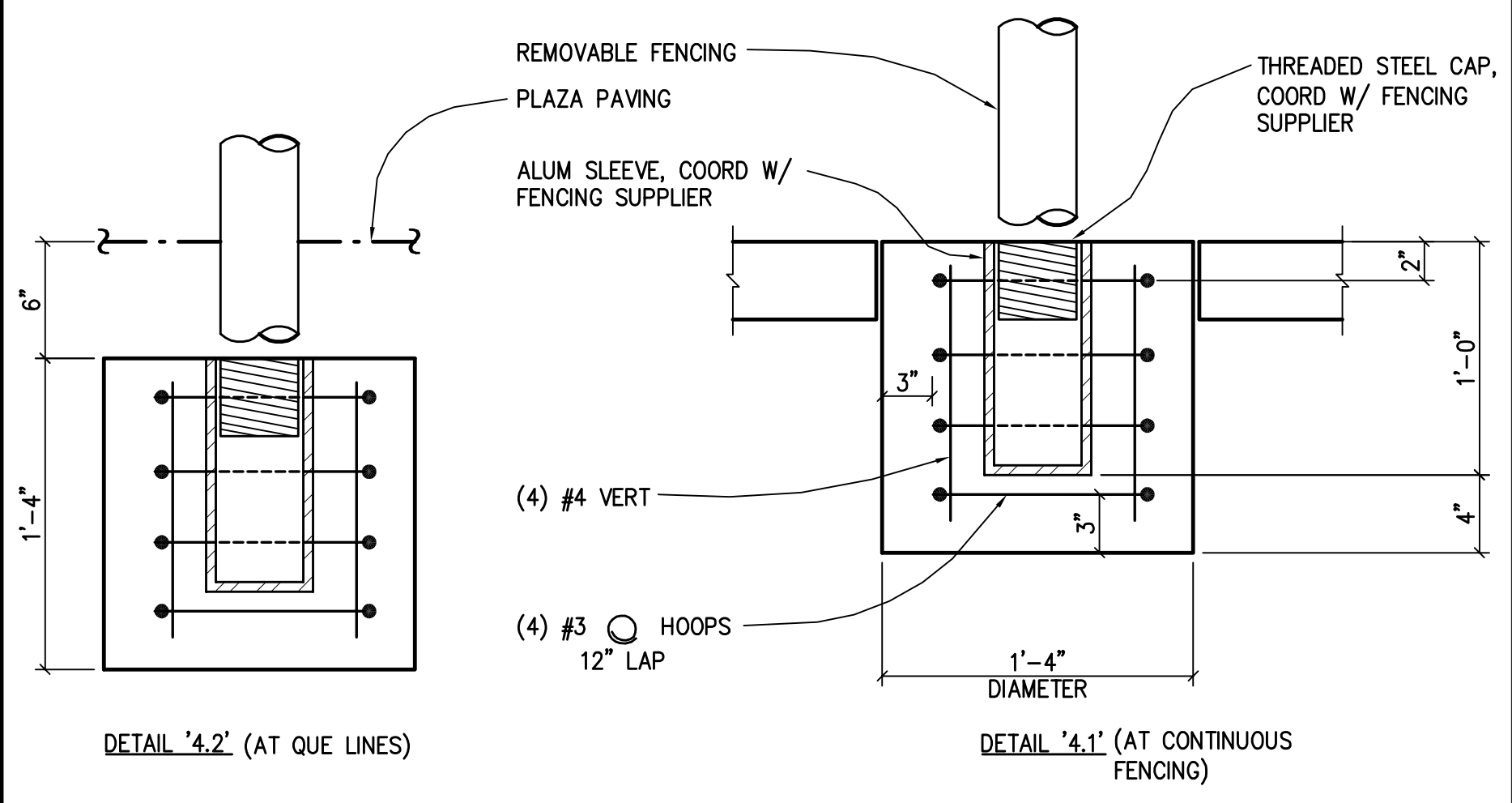
- 1.0 DEFINITIONS:
- A. ENGINEER: REFERENCES ON THE STRUCTURAL DRAWINGS TO 'ENGINEER' MEAN THE STRUCTURAL ENGINEER OF RECORD.
- 1.1 THESE NOTES SHALL SERVE AS THE SPECIFICATIONS.
- 1.2 UNDERGROUND UTILITIES: LOCATE EXISTING UTILITIES, AND NOTIFY ENGINEER OF EXISTING UTILITIES OR SUBGRADE CONDITIONS WHICH INTERFERE WITH WORK.
- 1.3 EXISTING STRUCTURES:
- A. CONTRACT DOCUMENTS HAVE BEEN PREPARED USING AVAILABLE DRAWINGS AND SITE OBSERVATION AS PERMITTED BY ACCESS RESTRICTIONS DURING DESIGN.
  - B. DURING CONSTRUCTION, THE CONTRACTOR MAY ENCOUNTER EXISTING CONDITIONS WHICH ARE NOT NOW KNOWN OR ARE AT VARIANCE WITH PROJECT DOCUMENTATION (DISCOVERY). CONTRACTOR SHALL NOTIFY THE LANDSCAPE ARCHITECT OF ALL CONDITIONS NOT PER THE CONTRACT DOCUMENTS. EXAMPLES INCLUDE:
    - CONDITIONS OF INSTABILITY OR LACK OF SUPPORT.
- 1.4 USE OF DRAWINGS:
- A. DO NOT SCALE DRAWINGS.
  - B. WHERE DISCREPANCIES OCCUR BETWEEN PLANS, DETAILS, AND GENERAL NOTES, THE MORE STRINGENT REQUIREMENTS SHALL GOVERN. DETAILS ON DRAWINGS TAKE PRECEDENCE OVER GENERAL NOTES AND TYPICAL DETAILS. DETAILS NOTED TYPICAL APPLY TO ALL SIMILAR CONDITIONS. WHERE NO SPECIFIC DETAILS ARE SHOWN, CONSTRUCTION SHALL CONFORM TO SIMILAR WORK ELSEWHERE ON THE PROJECT.
- 1.5 SUBMITTALS AND SUBSTITUTIONS:
- A. SUBMITTALS: IF THE CONTRACTOR REQUESTS A CHANGE FROM THE STRUCTURAL DRAWINGS, IT SHALL BE APPROVED BY THE LANDSCAPE ARCHITECT AND DESIGNED BY MARTIN/MARTIN, INC. PRIOR TO SUBMITTING SHOP DRAWINGS. VARIATION SHALL BE INDICATED ON THE SHOP DRAWINGS. CONTRACTOR SHALL COMPENSATE MARTIN/MARTIN, INC. FOR MAKING THE CHANGE.
  - B. SUBSTITUTIONS: LANDSCAPE ARCHITECTS APPROVAL SHALL BE SECURED FOR ALL SUBSTITUTIONS.
  - C. NONCONFORMANCE: NOTIFY LANDSCAPE ARCHITECT OF CONDITIONS NOT CONSTRUCTED PER THE CONTRACT DOCUMENTS PRIOR TO PROCEEDING WITH CORRECTIVE WORK. SUBMIT PROPOSED REPAIR TO THE LANDSCAPE ARCHITECT FOR ACCEPTANCE. CONTRACTOR SHALL COMPENSATE MARTIN/MARTIN, INC. FOR DESIGNING THE REPAIR.
  - D. THE FOLLOWING SUBMITTALS ARE REQUIRED:
    1. REINFORCING STEEL FABRICATION AND PLACING DRAWINGS.
    2. CONCRETE MIX DESIGNS
    3. STEEL FABRICATION AND PLACING DRAWINGS.
- 1.6 COORDINATION:
- A. STRUCTURAL DRAWINGS ARE NOT STAND-ALONE DOCUMENTS AND ARE INTENDED TO BE USED IN CONJUNCTION WITH CIVIL, LANDSCAPE, AND DRAWINGS FROM OTHER DISCIPLINES. THE CONTRACTOR SHALL COORDINATE ALL REQUIREMENTS OF THE CONTRACT DOCUMENTS INTO SHOP DRAWINGS AND WORK.
  - B. COORDINATE DIMENSIONS OF ALL OPENINGS, BLOCKOUTS, DEPRESSIONS, ETC., WITH LANDSCAPE DRAWINGS, DRAWINGS FROM OTHER DISCIPLINES, PROJECT SHOP DRAWINGS, AND FIELD CONDITIONS PRIOR TO SHOP DRAWING SUBMITTAL.

# GENERAL NOTES

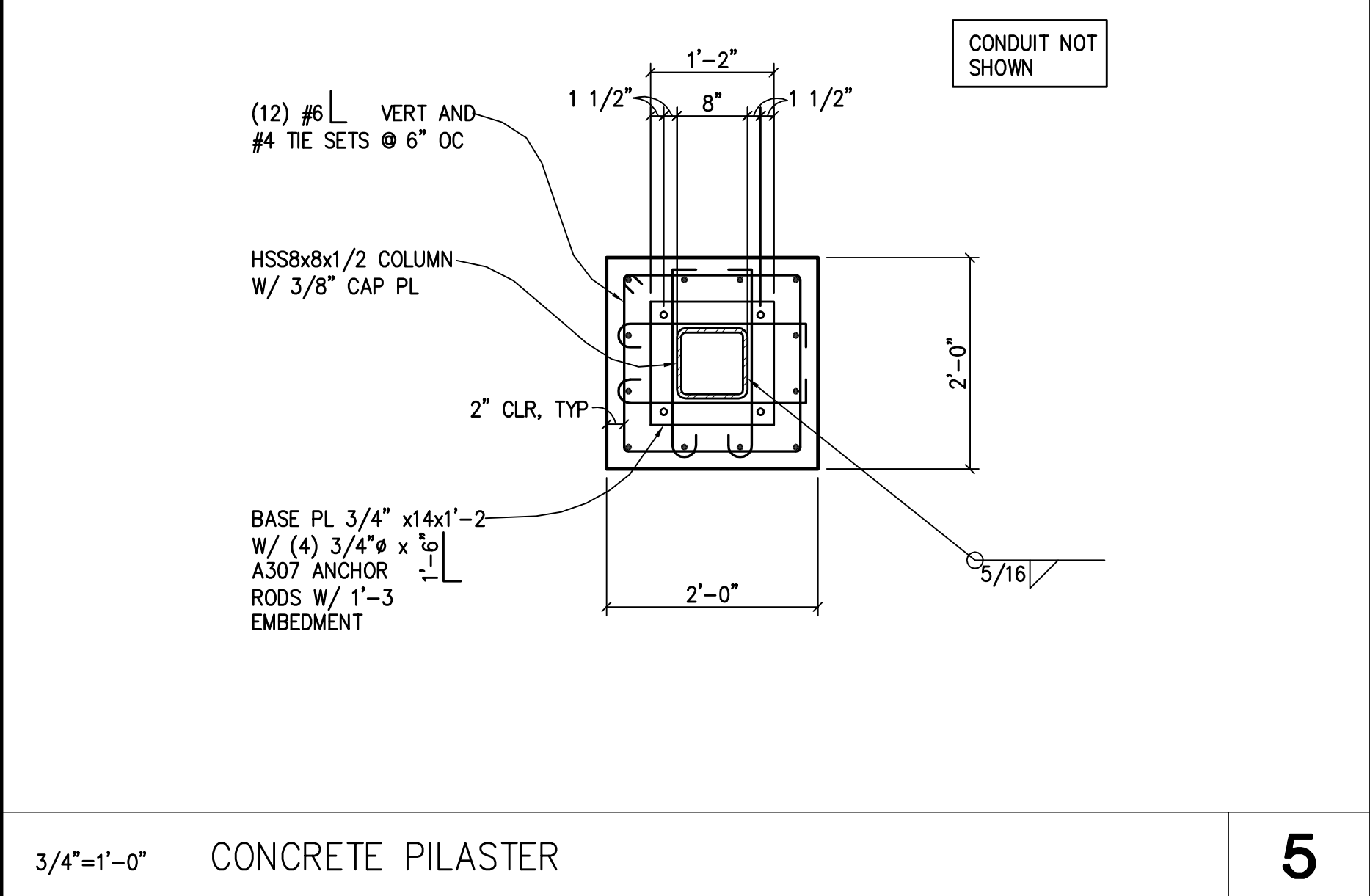
- 1.7 SPECIAL INSPECTION:
- SPECIAL INSPECTION SHALL BE PROVIDED PER IBC 2006 SECTION 109 AND CHAPTER 17. THE LIST BELOW IS A SUMMARY OF REQUIRED TESTS.
- SOILS:  
-SUBGRADE AND FILL BENEATH FOOTINGS AND SLABS-ON-GRADE
- CONCRETE:  
-INSTALLATION OF EMBEDDED BOLTS AND PLATES SUPPORTING STRUCTURE  
-REINFORCING STEEL PLACEMENT
- SECTION 2 - FOUNDATIONS
- 2.1 DESIGN CRITERIA:
- A. A SITE-SPECIFIC SOIL REPORT WAS NOT AVAILABLE TO DESIGN THE NEW MONUMENT FOUNDATIONS OF THIS PROJECT. THE FOLLOWING FOUNDATION DESIGN PARAMETERS WERE ASSUMED FOR THE FOUNDATION DESIGN AND SHALL BE INSPECTED AND VERIFIED BY THE OWNER'S ON-SITE GEOTECHNICAL ENGINEER PRIOR TO PLACING CONCRETE.
  - B. FOOTINGS:  
FOOTINGS FOR THE NEW MONUMENTS WERE DESIGNED USING AN ASSUMED 1500 PSF TOTAL LOAD SOIL BEARING PRESSURE.
- SECTION 3 - STRUCTURAL CONCRETE
- 3.1 ALL WORK SHALL CONFORM WITH ACI 301-99 UNLESS NOTED OTHERWISE IN DRAWINGS OR PROJECT SPECIFICATIONS.
- 3.2 DETAIL BARS IN ACCORDANCE WITH THE LATEST EDITIONS OF "ACI DETAILING MANUAL", PUBLICATION SP-66 WITH ADDED REQUIREMENTS OF THE PROJECT SPECIFICATION, AND "BUILDING CODE REQUIREMENTS FOR REINFORCED CONCRETE", ACI 318.
- 3.3 REINFORCING:
- A. REINFORCING: ASTM A615/A615M, GRADE 60 (GRADE 420) DEFORMED
  - B. WELDED AND FIELD BENT REINFORCING: ASTM A706/A706M, GRADE 60 (GRADE 420) DEFORMED
- 3.4 STRUCTURAL CONCRETE MIX REQUIREMENTS:
- A. RE: CONCRETE MIX TABLE

TYPE	INTENDED USE	28 DAY STRENGTH FC (KSI)	CONC. TYPE (NORMAL WT. (NW) OR HIGH STRENGTH (HS))	MAX W/C (INCLUDING FLY ASH)	MIN. CEM. MTR. (LBS./CY)	MIN. AIR (BY VOL. (%))	SLUMP LIMITS (IN) (0" - 2")	TOTAL AIR LIMITS (%) (2)	CEMENT TYPE	RECO. ADMIXTURES (3)	OTHER REQUIREMENTS (4)
1	FOOTING, PILASTER	4	NW	0.45	517	1	4	6	I or II	AE	
2	SITE PAVING	4.5	NW	0.40	564	1	4	6	1 ON 7	AE	FRC

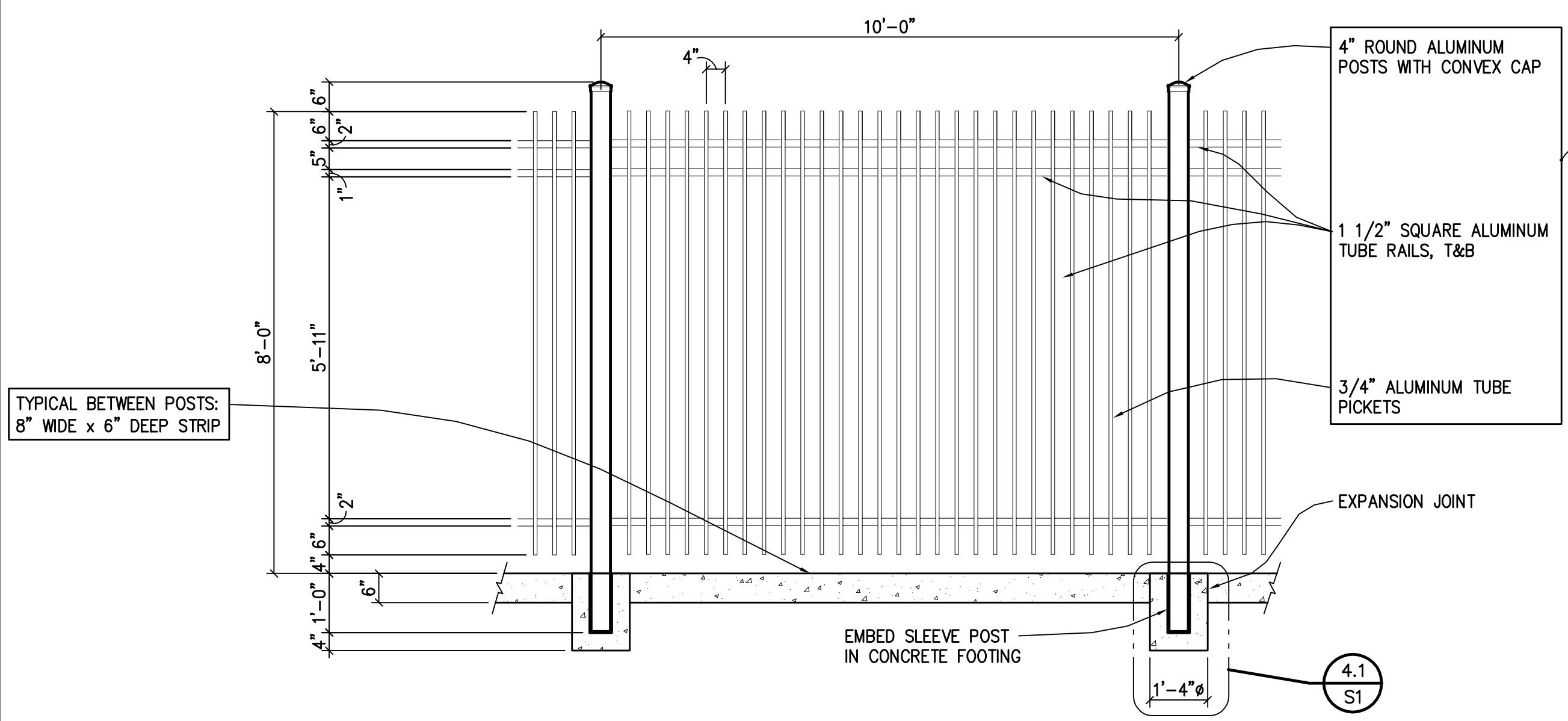
- NOTES:
- (1) FOR THE MAXIMUM COARSE AGGREGATE SIZE INDICATED, USE THE FOLLOWING AGGREGATE SIZE NUMBERS PER ASTM C33:
    - 1" #57 AGGREGATE
  - (2) TOTAL AIR CONTENT LIMITS INCLUDE BOTH ENTRAINED AND ENTRAPPED AIR +/- 1 1/2%.
  - (3) ABBREVIATIONS FOR REQUIRED ADMIXTURES AS FOLLOWS:
    - AE = AIR-ENTRAINING ADMIXTURE.
    - FRC = FIBER REINFORCED CONCRETE.
- 3.5 PLACING REINFORCEMENT:
- A. REINFORCEMENT PROTECTION
    1. CONCRETE PLACED AGAINST EARTH. . . . . 3"
    2. CONCRETE PLACED IN FORMS BUT EXPOSED TO WEATHER OR EARTH. . . . . 2"
  - B. REINFORCING PLACING TOLERANCES: PER ACI 117.
  - C. PROVIDE ACCESSORIES NECESSARY TO PROPERLY SUPPORT REINFORCING AND WELDED WIRE FABRIC AT POSITIONS SHOWN ON PLANS. ALL REINFORCING, DOWELS, BOLTS, AND EMBEDDED PLATES SHALL BE SET AND TIED IN PLACE BEFORE THE CONCRETE IS POURED. "STABBING" INTO PREVIOUSLY PLACED CONCRETE IS NOT PERMITTED.



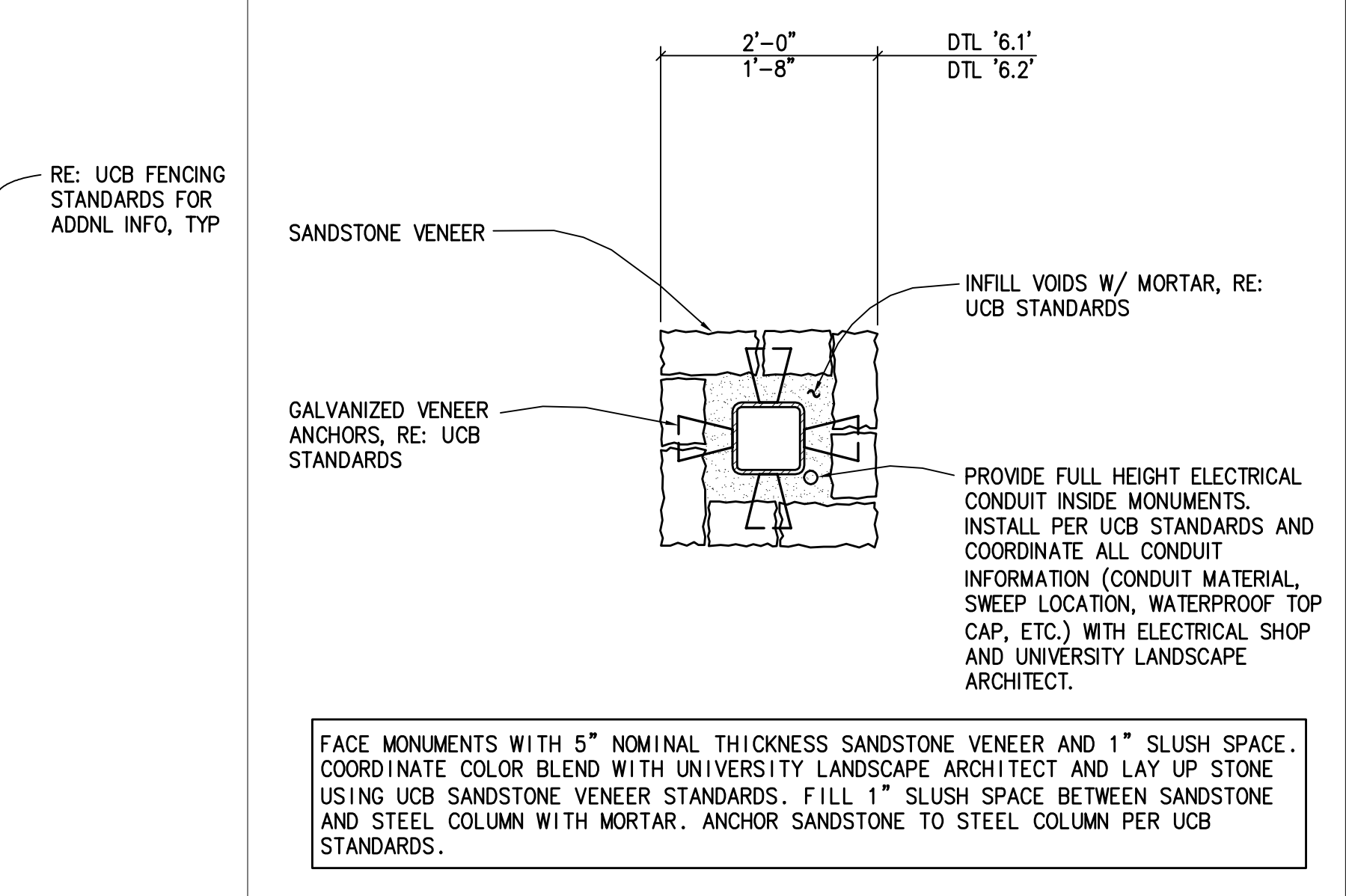
NO SCALE ENLARGED FENCE PIER DETAILS 4.1 4.2



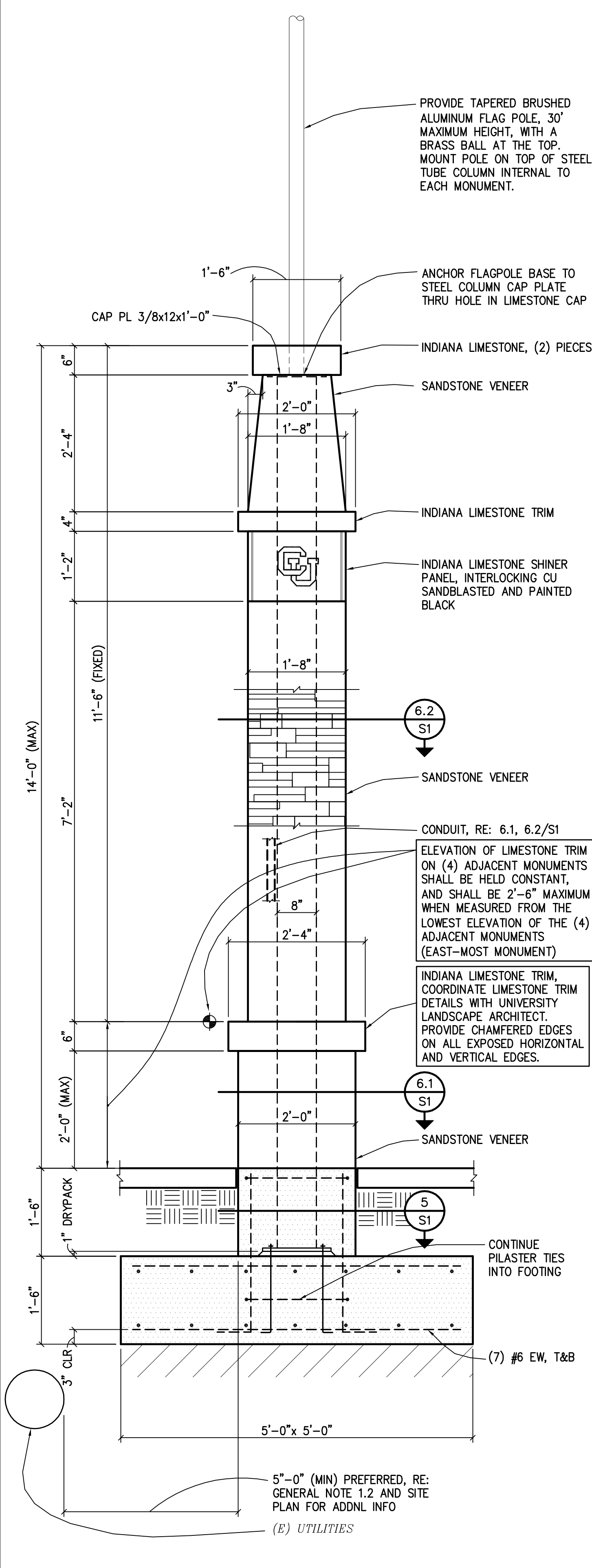
3/4" x 1'-0" CONCRETE PILASTER 5



1/2" x 1'-0" TYPICAL FENCE ELEVATION 9



3/4" x 1'-0" STONE COLUMN 6.1 6.2



3/4" x 1'-0" MONUMENT COLUMN 3

MARTIN / MARTIN  
CONSULTING ENGINEERS  
12499 WEST COLFAX AVENUE  
P.O. BOX 191500  
LAKEWOOD, COLORADO 80215  
303.431.6100  
FAX 303.431.6866

FOLSOM STADIUM  
REMOVEABLE FENCING & MONUMENTS  
PR#003428  
UNIVERSITY OF COLORADO AT BOULDER

7/18/08	OWNER REVIEW
8/20/08	FINAL REVIEW
9/17/08	FOR CONSTRUCTION

RELEASED FOR CONSTRUCTION  
NOT RELEASED FOR CONSTRUCTION

## DETAILS AND NOTES

DRAWN BY: DENNIS BUSSOW	CHECKED BY: BEN NELSON
PROJECT NUMBER: W/M 19132.S.50	
ISSUE DATE: 9/17/08 FOR CONSTRUCTION	
SHEET NUMBER: S1	

