



Diversified Consulting Solutions, Inc.

4100 W. 107th Drive
Westminster, Colorado 80031
303.818.7802

ADDENDUM NO. 2

CP005941 – KIOWA – Lab Addition

To: All Bidders
From: John H. Sattler, DCS Inc.
On behalf of University of Colorado, Boulder
Date: September 7, 2010
Distribution: File, Jennifer Sample, John Paul Robb

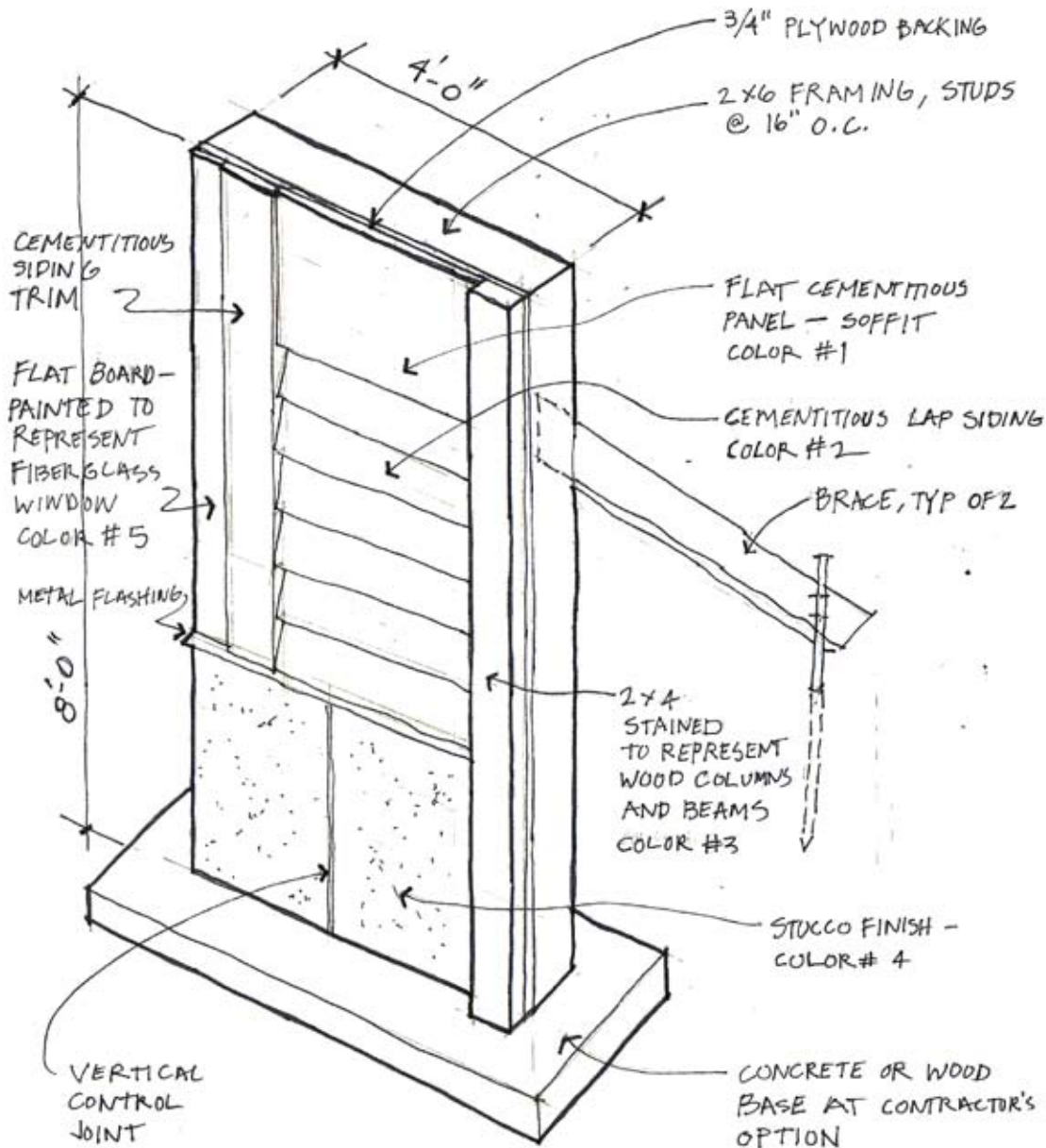
This Addendum supersedes the Drawings and Specifications by adding to, deleting from and/or modifying the Contract Documents as set forth herein. To the extent any such addition, deletion or modification result in any conflict or inconsistency between the drawings and specifications and this Addendum, this Addendum shall take precedence.

- A2.1 Project specific specification information is included in the drawings and addenda. If a material or product is not specified, the CU Standard specification information shall prevail, where applicable.
- A2.2 The drawings are 24" x 36".
- A2.3 This is not a LEED project. FSC Certified Wood is not specified or required. However, Low VOC paints, sealants and adhesives are recommended where feasible.
- A2.4 Fiberglass windows: Milgard Ultra Series (or approved equal).
- A2.5 Stucco finish on ICF's: SONO WALL Acrylic surfacing system (or approved equal).
 - a. ICF surface rasping and preparation per stucco finish manufacturer recommendations
 - b. Prima Coat base coat, includes Portland cement
 - c. Intermediate 6 fiberglass reinforcing mesh
 - d. Stucco Tex finish coat –integrally colored, fine to medium texture
 - e. Provide control joints in stucco finish. Allow 2 horizontal joints and 4 vertical joints per elevation. Locations to be approved by Architect
- A2.6 Cementitious Siding: HardiPlank lap siding, Smooth, 5" exposure, (or approved equal)
- A2.7 Cementitious Trim / Fascia: HardiTrim 4/4 Board (or approved equal)
- A2.8 Cementitious Soffit Panel: HardiSoffit Vented Smooth (or approved equal)
- A2.9 Cementitious Panel: HardiPanel Smooth (or approved equal)
- A2.10 Drain Wrap: Dupont Tyvek DrainWrap (or approved equal) shall be installed underneath all areas to receive cementitious siding, trim & flat panel. Provide compatible seam tape, flashing and fasteners per manufacturer's specifications and instructions.
- A2.11 Door & Window Flashing: Provide metal flashing above all doors and windows. Pre-finished or painted with color approved by Architect. Low VOC products are preferred.
- A2.12 Clarification of Alternate #1: The inside wall surface (Rm117B) should be painted 5/8" gyp. board. The wall surface inside the storage room (Rm 119) shall be cementitious siding on drain wrap on 1/2" OSB.

- A2.13 Foundation dampproofing and waterproofing system: EPRO SYSTEM III ICF (or approved equal) shall be installed at all locations of the foundation that will be backfilled and in contact with soil.
- A2.14 ICF Block widths shall be:
- a. Lower Level - 8" concrete + 2.5" foam on each side = 13"
 - b. Upper Level - 4" concrete + 2.5" foam on each side = 9"
- A2.15 Wall Finish Mock-ups: The CU Design Review Board requested that 3 mock-ups be constructed to assist in the process of final color selections for exterior materials. The attached sketch shows the typical mockup to be constructed on the site, in a location suggested by the contractor, and approved by the architect. Mockups construction shall be scheduled to allow CU and Architect review time prior to material installation.
- A2.16 Hour rated ceiling in Corridor CR117:
- a. 5/8" Sheetrock Brand Gypsum Panel, Firecode C core, (or approved equal), on RC-1 resilient channels or (or approved equal) spaced 12" or 16" o.c. Gypsum panels attached with 1" Type S screws, joints finished.
- A2.17 Batt Insulation / vapor barriers
- a. Ceiling / Attic - R-38 unfaced batts over 6 mil virgin poly vapor barrier. Tape all joints, seams, and penetrations.
 - b. Exterior wall, and east wall of Classroom / Lab on upper level: - R-19 unfaced batts over 6 mil virgin poly vapor barrier. Tape all joints, seams, and penetrations.
- A2.18 Vapor barrier under slab, all lower level:
- a. 6 mil virgin poly vapor barrier on top of 2" rigid insulation, on 6" washed gravel base. Tape all joints, seams, and penetrations.
- A2.19 Exposed wood columns and beams are to be stained and sealed. Color by Architect.
- A2.20 Exposed interior and exterior surfaces shall be painted per CU Standards. Color(s) by Architect.
- A2.21 Joint Sealants: Provide joint sealants per CU Standards at all joints, flashings, intersections of dissimilar materials, penetrations, etc. Exposed sealants shall be paintable or color matched and approved by Architect.
- A2.22 Toilet Accessories shall be provided by Owner and installed by Contractor. Grab Bars are to be provided and installed by Contractor.
- A2.23 The existing furnace is a York model PT8B12N100UH11C. The contractor will have to contact the equipment manufacturer to verify flue requirements. Contractor to coordinate relocated flue location prior to installation with Architect.

ENCL. Mock Up Sketch.

(END OF ADDENDUM NO.2)



CU KIOWA LAB ADDITION - MOCK-UP