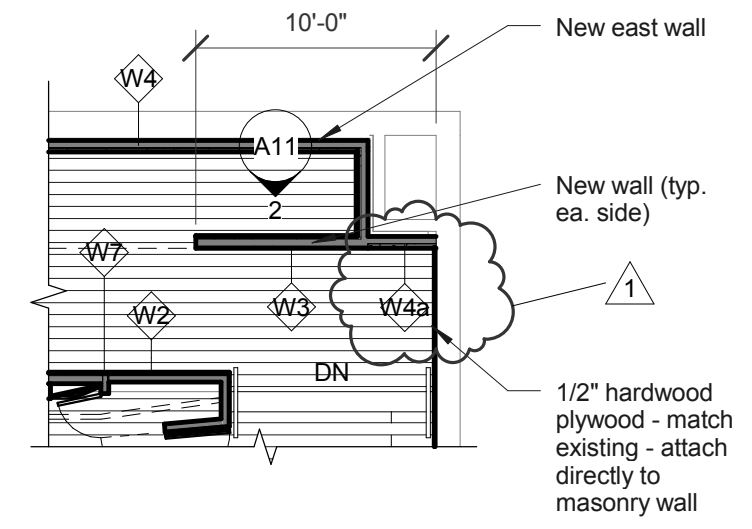


W1		Metal stud 2 1/2" with 5/8" painted gypsum board with level 3 finish interior side: 5/8" gypsum board and 1/2" oak plywood exposed face match existing, intumescent varnish finish
W2		Metal stud 2 1/2" with (2) layers 5/8" gypsum board on east face, and 5/8" painted gypsum board with level 3 finish interior side
W3		Metal stud 3 1/2" with 5/8" gypsum board and 1/2" oak plywood on exposed face, match existing, intumescent varnish finish: (2) layers 5/8" gypsum board
W4		Metal stud 3 1/2", unfaced acoustical batt insulation in cavity, three (3) layers 5/8" gypsum board laminated to one another with glue, one side, staggered joints between layers, level 3 finish on exposed side, 1/2" oak plywood wainscot to 72" a.f.f. (match existing) with intumescent varnish finish
W4a		Metal stud 3 1/2", unfaced acoustical batt insulation in cavity, three (3) layers 5/8" gypsum board laminated to one another with glue, one side, staggered joints between layers, level 3 finish on exposed side, 1/2" oak plywood
W5		Metal stud 3 1/2" with 1/2" plywood under 5/8" thick wood siding to match platform floor on exposed side, finish to match platform floor
W6		Metal stud 4" with 1/2" oak plywood (match existing) on ripped angled horizontal wood battens 18" max o.c. (see details) downstage side, (2) layers 5/8" gyp. board on upstage side
W7		1/2" Plywood wainscot match existing, intumescent finish, butt joint see 12/A11
W8		Metal stud 3 1/2" with 1/2" black melamine finish on interior side of cabinet

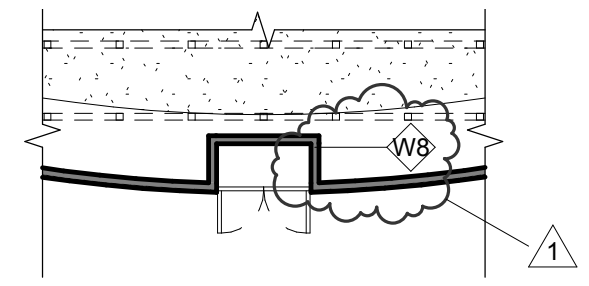
WALL TYPES

1/4" = 1'-0"



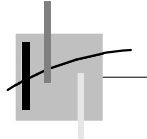
2 MAIN FLOOR PLAN

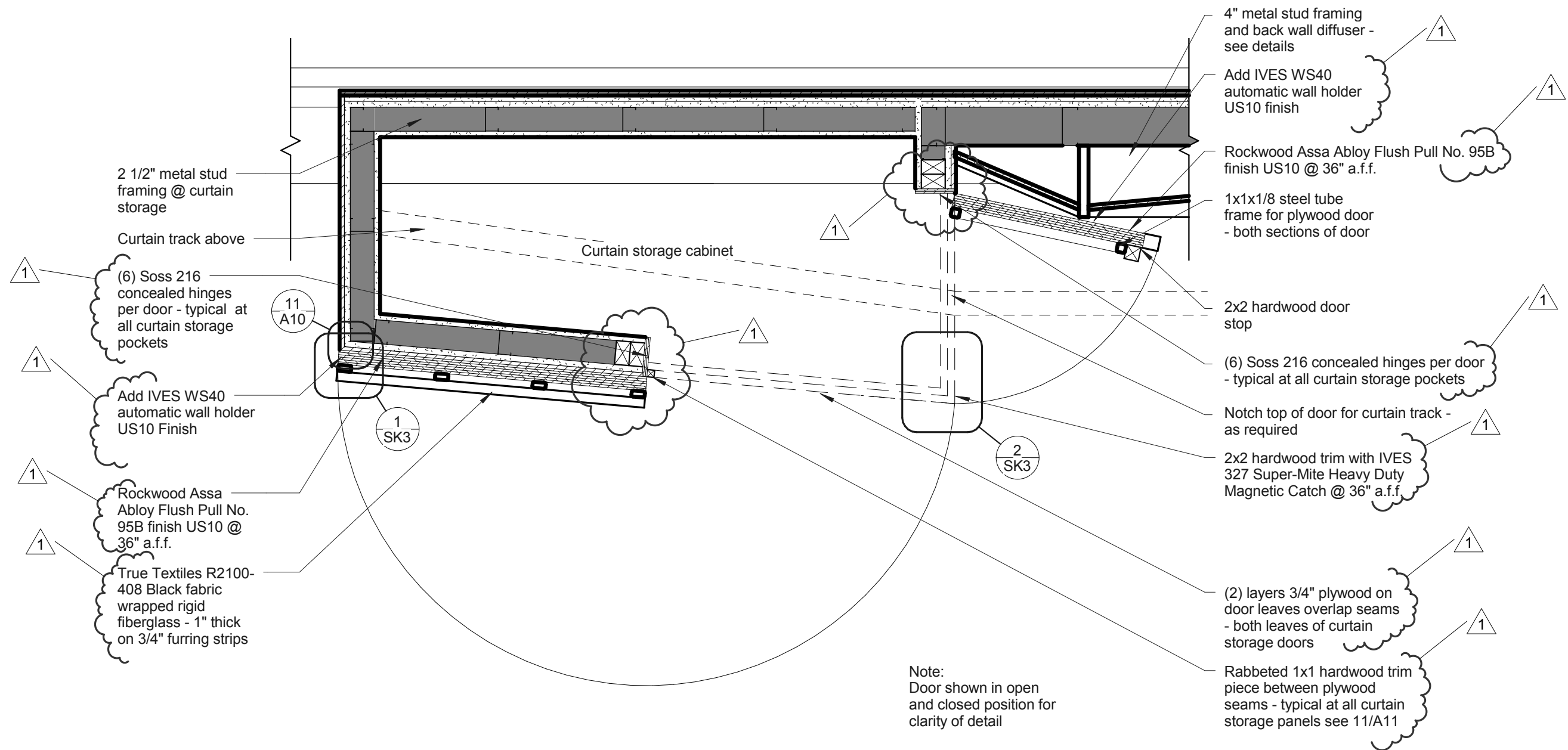
1/8" = 1'-0"



1 LOWER FLOOR PLAN

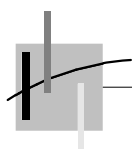
1/8" = 1'-0"

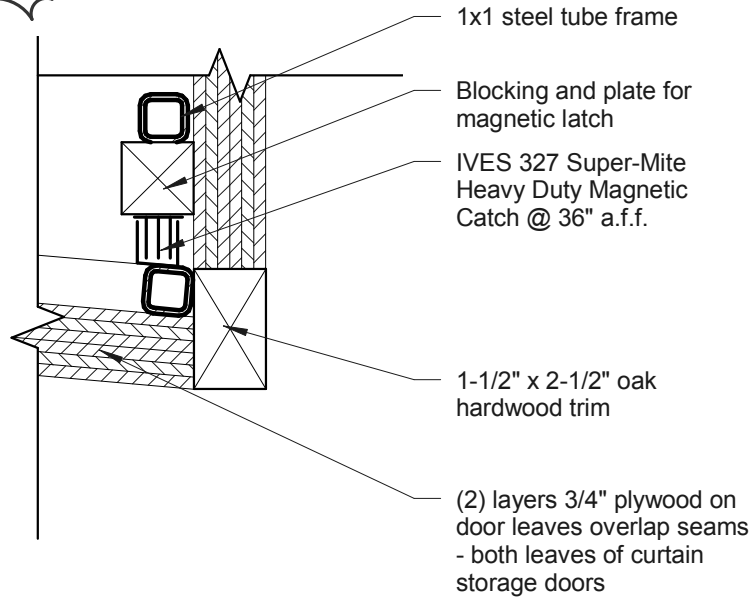




ADDENDUM 1 - ENLARGED PLAN @ CURTAIN STORAGE

1
DOOR
1" = 1'-0"





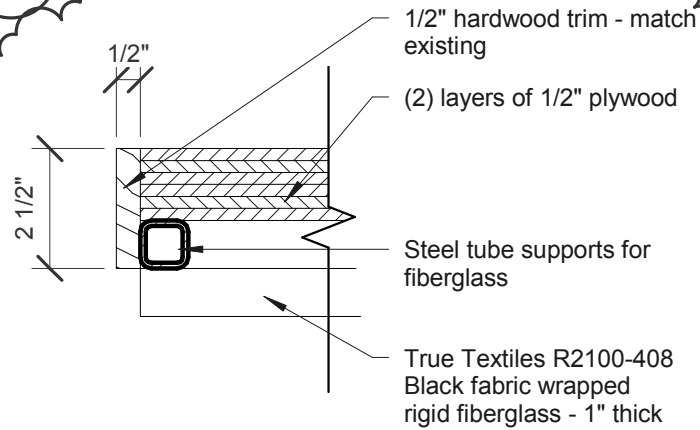
1

1

2

DETAIL @ CURTAIN DOOR LATCH

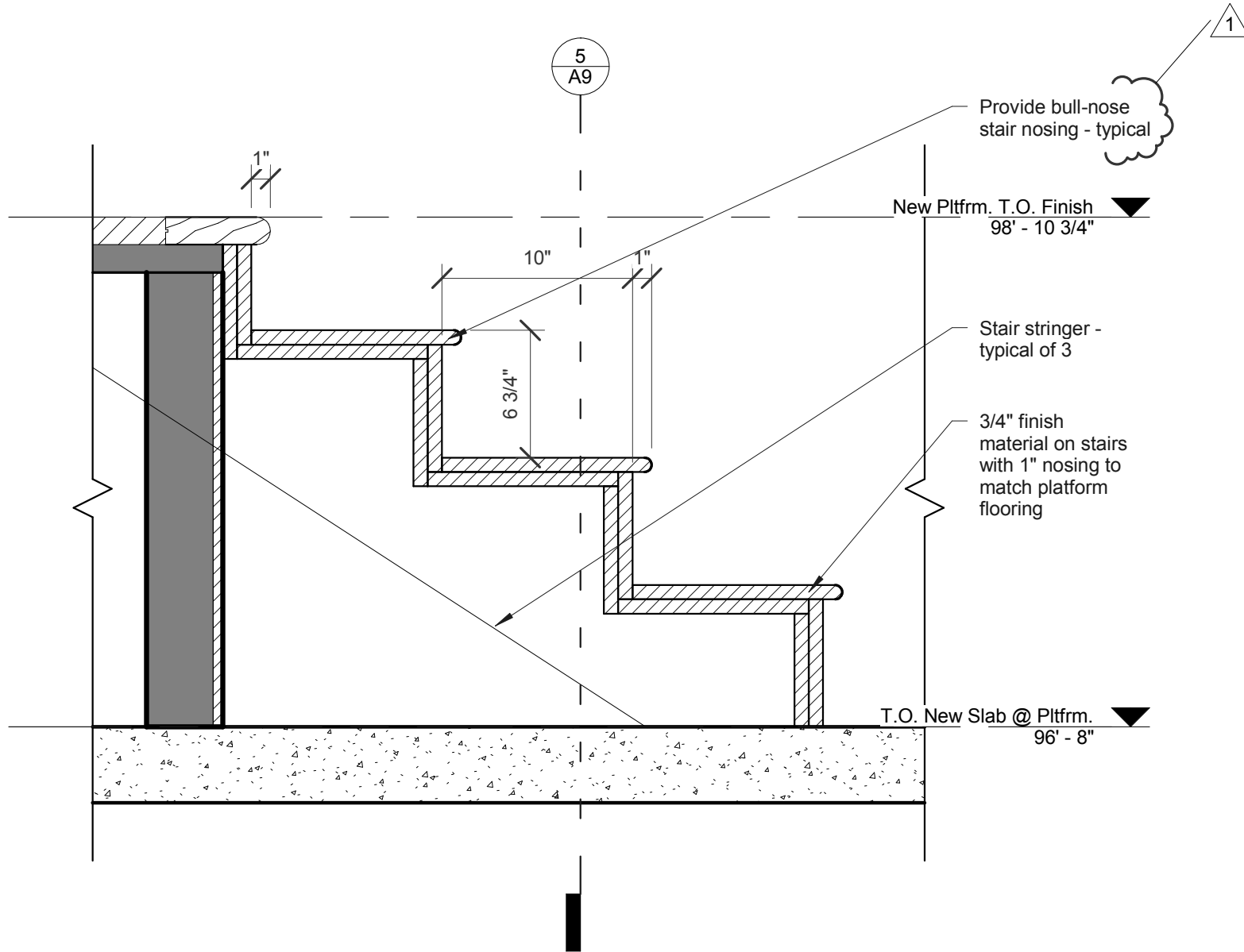
3" = 1'-0"



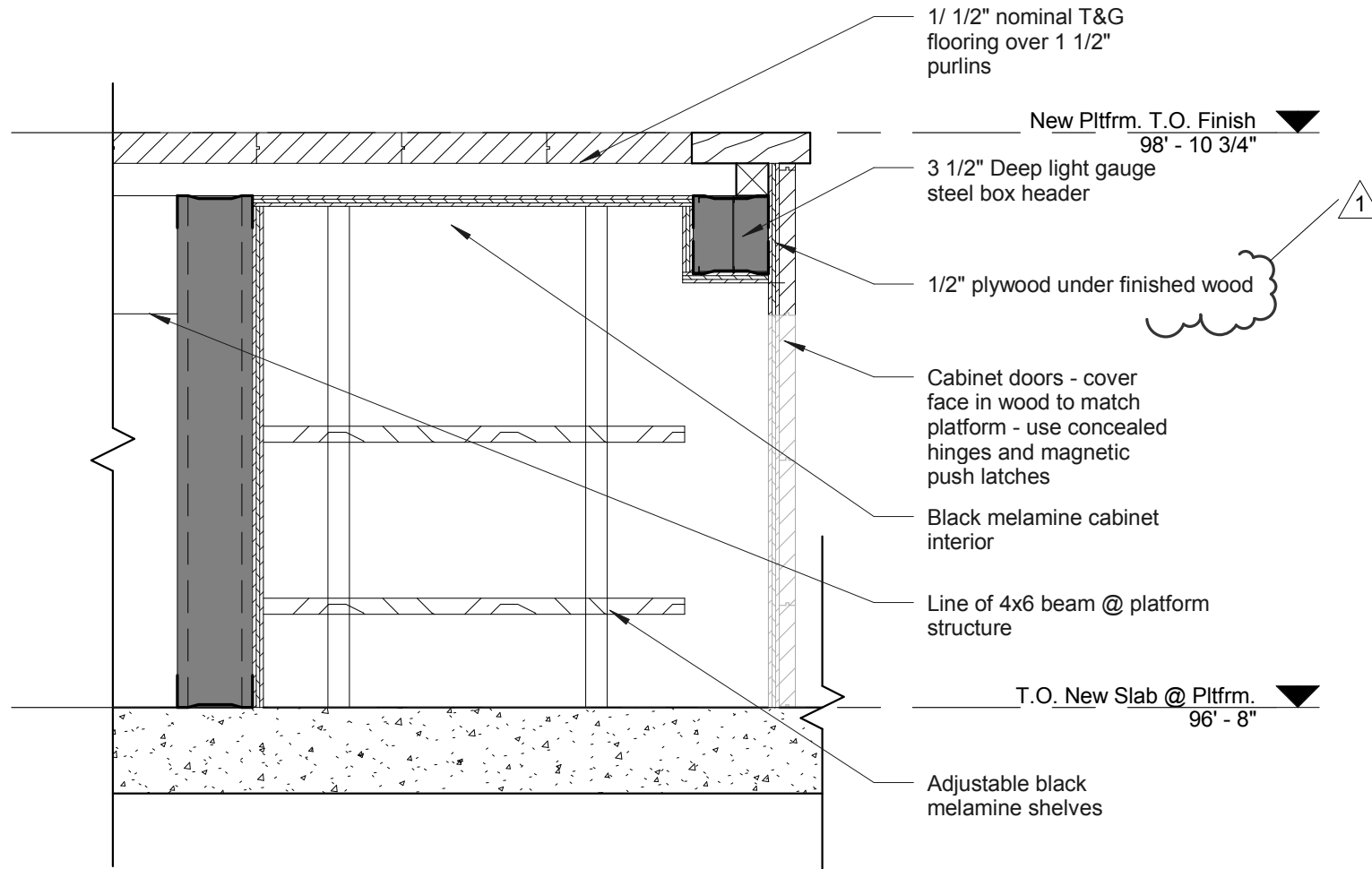
1

CURTAIN STORAGE DOOR EDGE

3" = 1'-0"

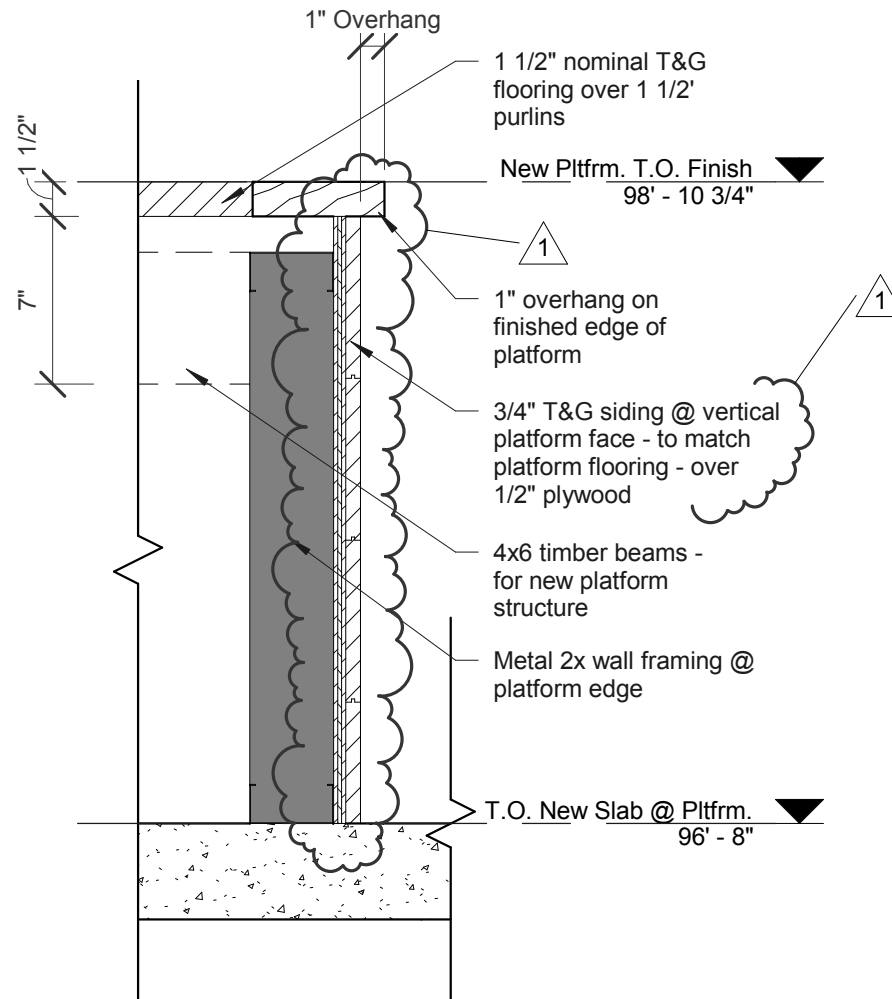


1 ADDENDUM 1 - SECTION THROUGH STAIR RUN
 1 1/2" = 1'-0"



GRUSIN HALL PRO05283
studio h:t

1 ADDENDUM 1 - SECTION THROUGH AV CABINET
 1 1/2" = 1'-0"

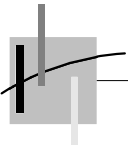


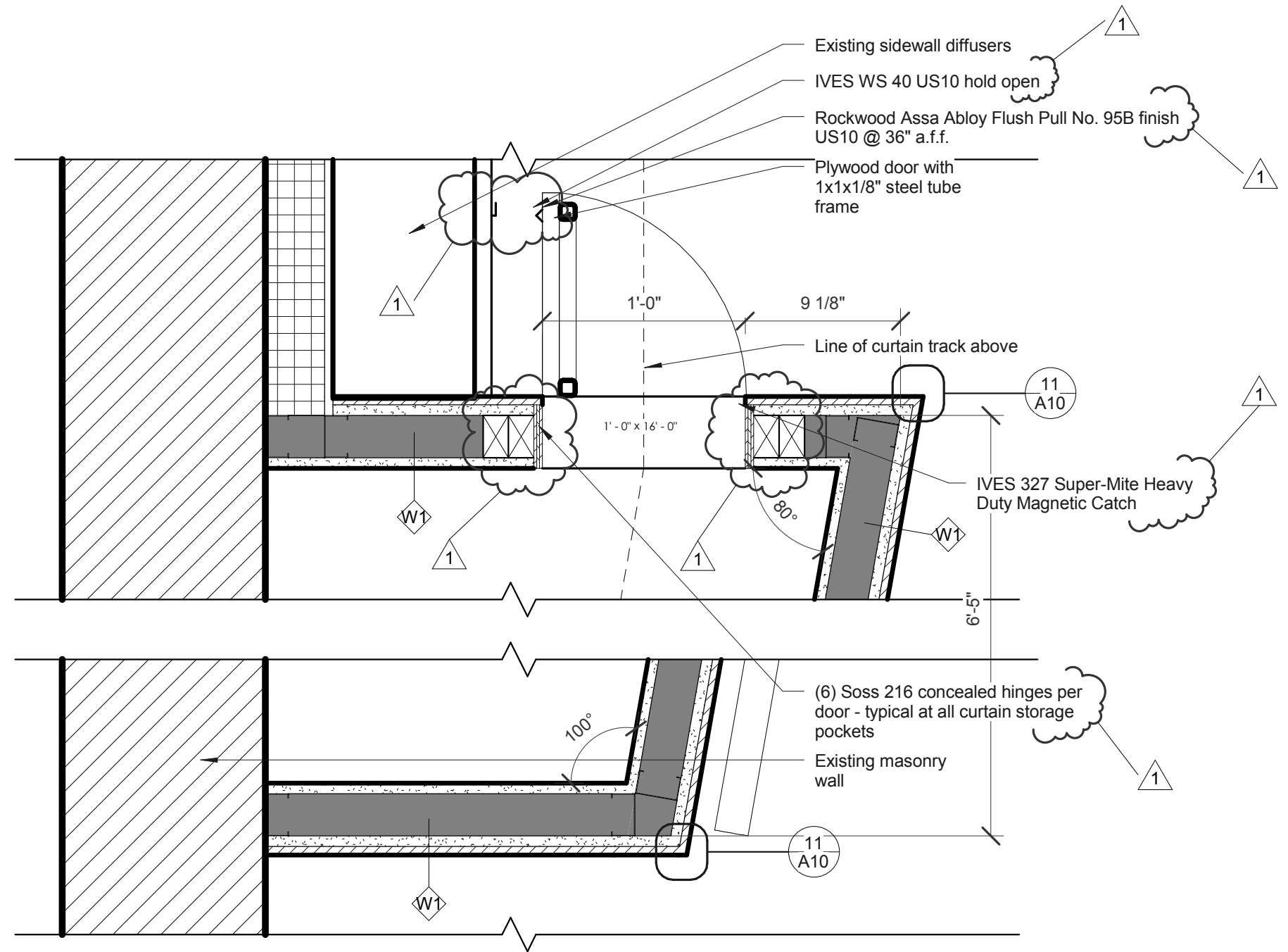
1

ADDENDUM 1 - WALL SECTION @ STAGE LIP

1 1/2" = 1'-0"

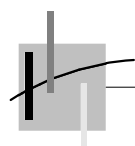
GRUSIN HALL PRO05283
studio h:t

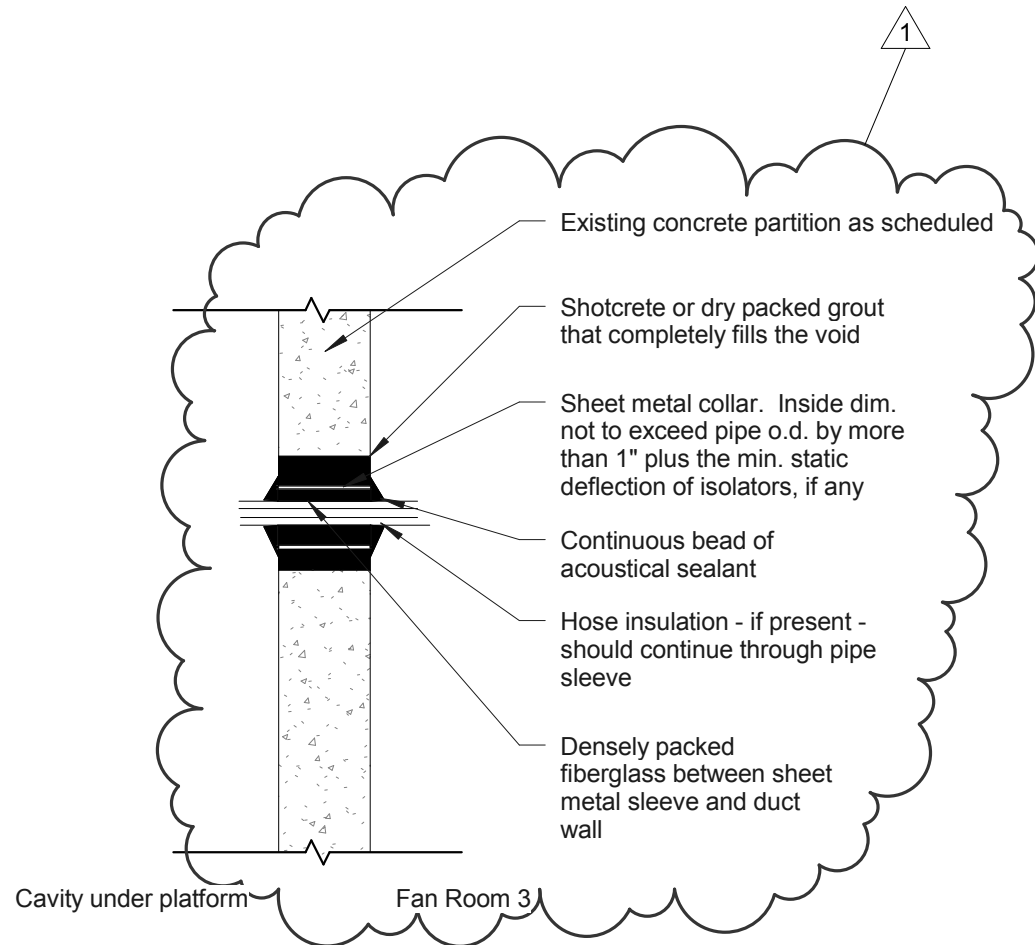




ADDENDUM 1 - ENLARGED PLAN - SIDE CURTAIN STORAGE DOOR

1
1 1/2" = 1'-0"

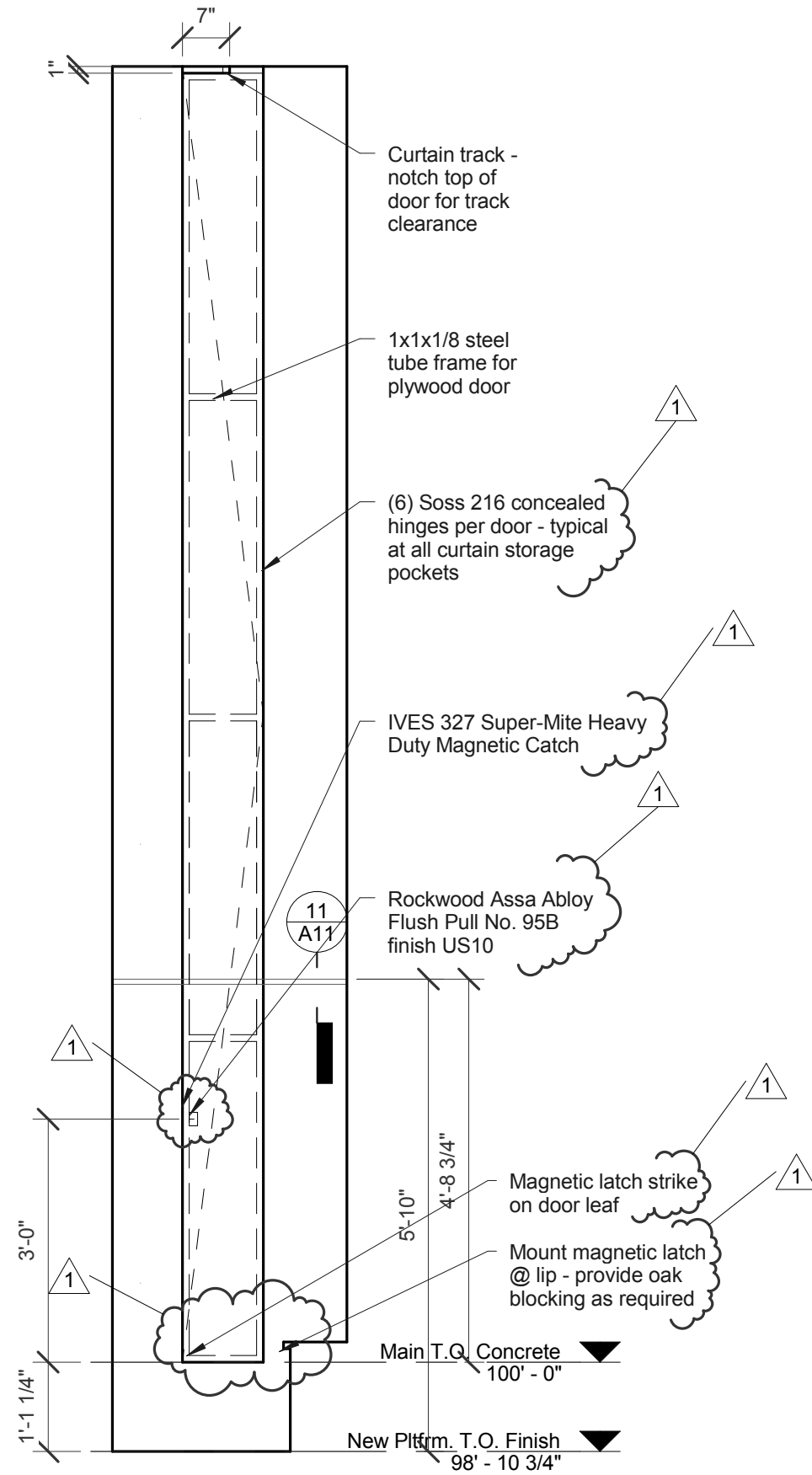




ADDENDUM 1 - ELECTRICAL/HYDRAULIC WALL

2 PENETRATION

3/4" = 1'-0"



ADDENDUM 1 - SIDE CURTAIN W

1 1/2" = 1'-0"