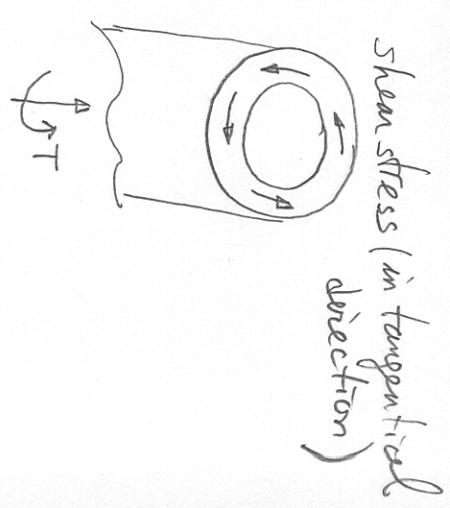
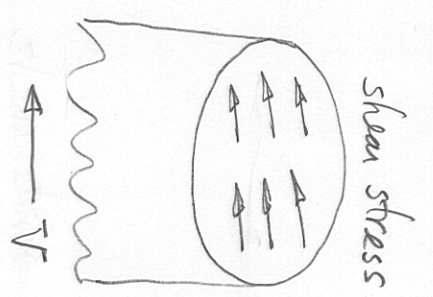
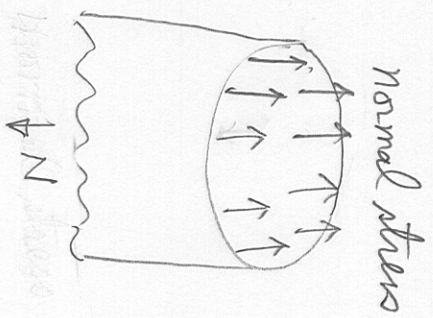


Review of Undergraduate Mechanics

o Stress: The intensity of an internally distributed force that is normal (parallel) to the surface of an imaginary cut is called the normal (shear) stress on the surface.



normal stress:

tensile stress - pulls the surface bodies away from the  $N$

compressive stress - pushes  $N$

axial stress - bar, rod, cable, column

bearing stress  $\rightarrow$  bearing stress

shear stress:

single & double shear

