



TRESTLE is an NSF-funded grant to test models of educational improvements at 7 universities in the U.S. and Canada, all part of the Bay View Alliance.

- TRESTLE Institutions:**
- University of Kansas (Lead)
  - Indiana University
  - University of Colorado
  - University of California, Davis
  - University of Texas at San Antonio
  - University of British Columbia
  - Queens University

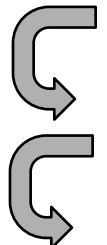
**History: The SEI**  
<http://colorado.edu/sei>  
Postdocs partnered with faculty

|                 | U. Colorado             | UBC                           |
|-----------------|-------------------------|-------------------------------|
| # Years         | 8                       | 7 (ongoing)                   |
| Total Funding   | \$5.3M USD              | -9.7M USD                     |
| Funding / Dept. | \$150-860K (ave \$650K) | \$300K-\$1.75M (Ave \$1.68 M) |
| # Depts.        | 7                       | 7                             |
| # EE's / Dept.  | 1-3                     | 2-5                           |

| Impact on...    |                                  | CU           | UBC           |
|-----------------|----------------------------------|--------------|---------------|
| <b>COURSES</b>  | # courses (ave % per dept)       | 103 (25%)    | 146 (33%)     |
| <b>STUDENTS</b> | Annual enrollment (ave % annual) | 18,000 (50%) | 43,000 (59%)  |
| <b>FACULTY</b>  | # faculty (ave % per dept)       | 190 (66%)    | Not available |

RESULTS ACROSS DEPARTMENTS

**Objective:**  
*Widespread use of evidence-based teaching practice in STEM departments.*



**Observation:** The Science Education Initiative hired and trained postdocs to partner with faculty on course transformation projects. Effective, but costly.

**Question:** How can we propagate change through a more limited infusion of resources and personnel?

**Proposed solution:** By building communities of scholars around course transformation, to amplify the effects of local experts.

*Stay tuned for results : We are starting Year 2 of a 5-year grant*

