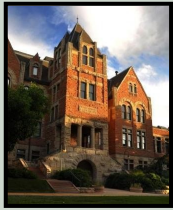


# CU ANTHROPOLOGY



FALL 2010 QUARTERLY  
Volume 1, Issue 3

Back issues of our alumni newsletters can be accessed at:  
<http://www.colorado.edu/Anthropology/news/>

**IN THIS ISSUE**  
*Reciprocity makes a comeback*  
*More links for avid anthropologists*  
*Latin American Studies Center launches*  
*Faculty and grad publications*  
*More alum news*

## Reciprocity

One of the core values of the original American peoples was to give back to the community, a concept just catching on again in the general population under the current recession. The principle of 'reciprocity' is being steadily incorporated into the professional work of our best anthropologists:

Last summer, **Gerardo Gutierrez** presented copies of the Humboldt codices to the Native Communities of Tlapa, Mexico, where they originated. One of the goals of publishing the codices was to provide the communities—who paid tribute to their Aztec overlords, and who depicted the payment for posterity—with an historical record for their own keeping.

The people of Tlapa then offered to publish Gutierrez' study of the archaeology of their ancient community. The resulting book (page 4) will be used as a reference for cultural resource management.

Images of the ceremony are available at <http://www.colorado.edu/Anthropology/news/departmentnews.html>



"NAGPRA after Two Decades" is the subject of a recent issue of *Museum Anthropology* in which **Steve Lekson** reflects on changing relations between museums and tribes over the years. He is in the company of a number of well-known scholars in this field of anthropological practice in this issue with his article, "Commentary: My Adventures in Zuni—and Kykotsmovi and Window Rock and..."

See <http://museumanthropology.blogspot.com/2010/09/museum-anthropology-vol-33-n-2.html> for a list of articles.

Steve and the collections management staff of the Anthropology Section of the CU Museum of Natural History have an outstanding record with respect to NAGPRA consultations and repatriations of Native ancestors / human remains. Over the years, they have facilitated the repatriation of Native American human remains representing 380 individuals and 800 funerary objects from the Southwest, Northern Plains, and Eastern Colorado. Human remains representing 173 Native American individuals from Wyoming, Northeastern Colorado, Boulder County, Wisconsin, New Mexico, and unknown geographic locations will to be repatriated in 2010.

*Continued on page 2*

## PUBLIC EVENTS

### IN BOULDER

***Australopithecus sediba*, a new Homo-like species of Australopith from South Africa**

**November 5, 2010 at 4:00 pm in Hale 270**  
**Dr. Darryl de Ruiter**, paleoanthropologist from Texas A&M University and one of the principal researchers at the newly discovered site of Malapa in South Africa will be speaking to the CU community about the recent *Australopithecus sediba* discovery and the ongoing research surrounding it. He will discuss the relevance of the new species and how it alters many of our interpretations of hominin evolution. Further details TBA. Contact: [oliver.paine@colorado.edu](mailto:oliver.paine@colorado.edu)

### IN NEW YORK — Trash Talk

**Paul Shankman**, author of *The Trashing of Margaret Mead*, has been invited to give the annual Distinguished Lecture in Anthropology at the American Museum of Natural History in New York **December 22**. The topic: the Mead-Freeman controversy, naturally. Keep an eye on the museum's event calendar for further details: <http://www.amnh.org/programs/>

## SEND US YOUR NEWS

[anthro@colorado.edu](mailto:anthro@colorado.edu)

Department of Anthropology  
233 UCB / 350 Hale Science Bldg.  
University of Colorado Boulder  
Boulder, CO 80309-0233  
(303) 492-2547

## Reciprocity continued

Under the direction of Assistant Professor **Jen Shannon**, the University of Colorado Museum of Natural History has begun ***iShare: Connecting Museums and Communities East and West***, an international project with the Navajo Nation Museum, the National Taiwan Museum, and the Paiwan indigenous community of Taiwan. Funded by a Museums & Community Collaboration Abroad grant from the American Association of Museums, this project will include international travel between Taiwan and the US and produce an online collaborative website.

In early October, Shannon, graduate student Kendall Tallmadge, and CU Museum Senior Educator Jim Hakala traveled to Window Rock, AZ, to meet with Navajo Nation Museum director Manuelito Wheeler, curator Clarendia Begay, and administrator Michelle Henry. In addition to the web application, the Navajo Nation partners decided their ultimate goal for the project would be to develop, in cooperation with the CU Museum's Education Department, teaching kits to be used in local reservation schools. Graduate students **Kendall Tallmadge** and **Lee Ann Allen** will play key roles in their preparation.



Jen Shannon right, Kendall Tallmadge left..

**Cathy Cameron**, as editor of the *Journal of Archaeological Method and Theory*, broke a national press story from our sister department in Denver about Julien Riel-Salvatore's research into the unsuspected sophistication of Neanderthals. See this CU press release at <http://www.ucdenver.edu/about/newsroom/newsreleases>

For decades scientists believed Neanderthals developed 'modern' tools and ornaments solely through contact with *Homo sapiens*, but new research from the University of Colorado Denver now shows these sturdy ancients could adapt, innovate and evolve technology on their own.

The findings by anthropologist Julien Riel-Salvatore challenge a half-century of conventional wisdom maintaining that Neanderthals were thick-skulled, primitive 'cavemen' overrun and out-competed by more advanced modern humans arriving in Europe from Africa.

"Basically, I am rehabilitating Neanderthals," said Riel-Salvatore, assistant professor of anthropology at UC Denver. "They were far more resourceful than we have given them credit for..."

A symposium about the process and outcome of the *iShare* international partnership will be held at CU at the culmination of the project next year. For more information, see <http://www.aam-us.org/mcca/taiwan09-11.cfm>

## FOREVER ANTHROPOLOGISTS

Have you heard *The Sounds of Science*?  
On YouTube at :

<http://www.youtube.com/watch?v=0TZkKylFHD0>

## ANTHROPOLOGISTS IN THE MEDIA

**Michelle Sauther's** research in Madagascar with partner **Frank Cuozzo** (PhD '00) is highlighted in *Popular Anthropology*, "a free online magazine dedicated to fostering a much-needed dialogue between anthropologists and the general public," viewable online at <http://www.popanthro.com/media/issue2/index.html>. Go to pages 28-29. You should be able to view it as a little journal you can page through online. Zoom in for legibility.

The blurb about this online journal is of general interest:

"Anthropologists spend years conducting research and writing important articles that rarely reach the public. This magazine's objective is to construct a bridge between scientists and the public to inform, educate, and ultimately share that vast amount of knowledge in a manner that is both considerate and informative. Each issue contains features submitted by social scientists working in the subfields of Archaeology, Biological Anthropology, Cultural Anthropology, and Linguistic Anthropology. In addition, articles from other social scientists and interdisciplinary fields are also presented. Each issue features several departments written by social scientists, including Social Science across the Globe, Primate News, and Global Education."

The link to the journal online is:

<http://www.popanthro.com/>

## ¡Por fin! ¡El Centro de Estudios Latinoamericanos se realizó! O Centro de Estudos Latino-Americanos foi finalmente fundado!



*The Latin American Studies Center has finally launched, after decades of incubating as an idea, and is now available online at: <http://www.colorado.edu/ArtsSciences/lasc/index.html>.*

*If you'd like to be added to the Friends of the Center listserv, send your email addresses to Kate Fischer [katherine.fischer@colorado.edu](mailto:katherine.fischer@colorado.edu).*

**Donna Goldstein** is on the steering committee and **Kate Fischer**, our PhD student, is Assistant to the Director. We have quite a number of faculty and graduate students who will have active associations with the new center, so this is an exciting development for the Department of Anthropology.

**Goldstein, Donna** Associate Professor  
**Geographic Research Area:** Brazil, Southern Cone  
**Research/Teaching Focus:** Research: Pharmaceutical Politics, Science Studies, Neoliberalism, Globalization, Crime and Violence in Latin America.

Teaching: Political Economy and Power, Critical Medical Anthropology, the Anthropology of Latin America, Race, Class, and Gender in Brazil, Southern Cone Dictatorships, Latin American Films

**Website:** <http://www.colorado.edu/Anthropology/faculty/goldstein/>

**Dufour, Darna** Professor  
**Geographic Research Area:** Colombia  
**Research/Teaching Focus:** Biological and behavioral responses of human populations to nutritional problems with special emphasis on responses to food shortages and the presence of toxins in foods.

**Gutierrez, Gerardo** Assistant Professor  
**Research/Teaching Focus:** Research focus: Political competition and territorial expansion in Late Postclassic Mesoamerica; Geographic Information Systems for social sciences; Archaeology and the history of ancient disasters. Teaching focus: Mesoamerican archaeology and ethnohistory

**Joyce, Arthur** Associate Professor  
**Geographic Research Area:** Mexico  
**Research/Teaching Focus:** Pre-Columbian peoples of Mesoamerica particularly surrounding issues of power, political dynamics, and landscape

**McGoodwin, James** Professor Emeritus  
**Geographic Research Area:** Mexico  
**Research/Teaching Focus:** Maritime and coastal people worldwide

**Roland, L. Kaifa** Assistant Professor  
**Geographic Research Area:** Cuba  
**Research/Teaching Focus:** Anthropology and Tourism, Cuban Culture and Nationalism, Comparative of Caribbean Cultures  
**Website:** <http://profmama.wordpress.com/main-page/>

**Sheets, Payson** Professor  
**Geographic Research Area:** Central America  
**Research/Teaching Focus:** Archaeology of Mesoamerica and the Intermediate Area of lower Central America

*Graduate students with studies focused in Latin America on page 6*

## FACULTY AND GRAD NEWS

### Dennis Van Gerven Wins Teacher Recognition Award—again!

**Dennis Van Gerven** has just been honored by the Alumni Association as one of three recipients of the 2010 Teacher Recognition Award. “These awards are the only student-chosen awards for professors and have been a tradition since 1962. The voting was coordinated by The Herd, the student arm of the CU-Boulder Alumni Association.” This is the fourth time students have selected Van Gerven for his excellence in teaching, so there is little room for doubt about it.

### Herbert Covert Named Global Citizen of the Year

**Bert Covert** has been named CU-Boulder’s 2010 Global Citizen of the Year by the Office of International Education. The award will be presented during International Education Week at a special awards ceremony and reception on Tuesday, November 16 from 4:30 to 6:30 pm in the JD Abrams Student Cultural Lounge in the Center for Community on the CU-Boulder campus. Nominator(s) [at right] and friends invited!

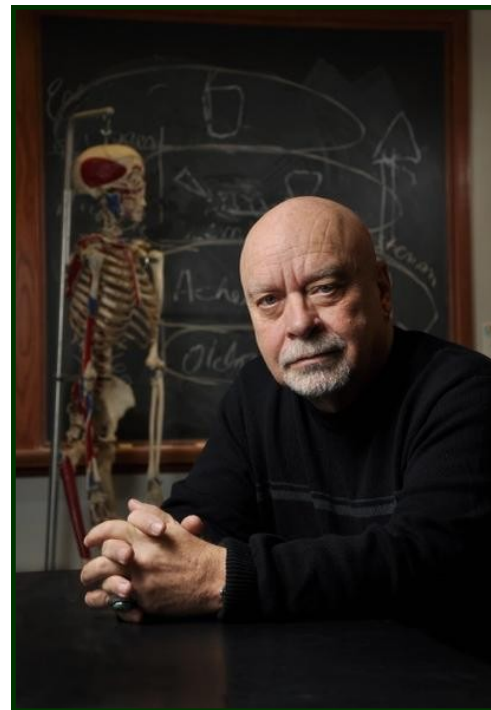
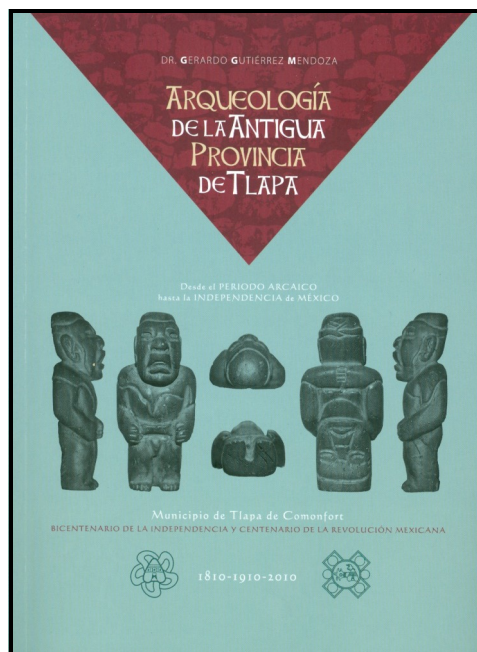


Photo by Glenn J. Asakawa/University of Colorado

## NEW BOOKS



***Arqueología de la Antigua Provincia de Tlapa desde el periodo arcaico hasta la Independencia de México***

**Gerardo Gutiérrez’** latest book, on the *Archaeology of the Ancient Province of Tlapa*, has just been published by the Indian Municipality of Tlapa and *Letras Antiguas*. Bilinguals among you can read a review in *La Jornada de Guerrero*: [www.lajornadaguerrero.com.mx/2010/10/23/index.php?section=sociedad&article=007n2soc](http://www.lajornadaguerrero.com.mx/2010/10/23/index.php?section=sociedad&article=007n2soc)

Cover notes:

This volume provides archaeological characteristics of the 224 most relevant pre-Hispanic sites located in eastern Guerrero State, specifically from the area that covered the ancient colonial province of Tlapa: from the Huamuxtitlan ravine in the north, to the ancient Azoyú domain at Costa Chica; and from Atlixac in the west, to the former chiefdom of Alcozauca in the east. The sites described here cover all time periods, beginning with possible encampments in the Archaic to sites from the Middle Formative, Classic, Epiclassic, Postclassic, and Colonial Periods, all the way to Mexican Independence.

In addition to the customary descriptions, this study includes interpretations of the relevance of each site and its relation to the regional system of settlement. This material is accompanied by a profusion of maps and photographs that help to stress the importance of this archaeological province, which has been little explored and at the mercy of intense sacking. With the hope of driving and facilitating the development of future investigations in eastern Guerrero, the Municipality of Tlapa offers this material to the academic public and to the residents of Guerrero.

## PUBLICATIONS

**Dennis McGilvray** and associate Michele Gamburd co-authored an article about the Sri Lanka tsunami research project in the October issue of *Anthropology News*.

Link to the article at: [www.aaanet.org/publications/upload/51-7-Gamburd\\_McGilvray-In-Focus.pdf](http://www.aaanet.org/publications/upload/51-7-Gamburd_McGilvray-In-Focus.pdf)

## ALUM NEWS

**Priscilla B. Ellwood (MA '78)** died peacefully on October 17, 2010 at the age of 91. Priscilla and husband, Vinny, traveled to the Canyonlands in Utah frequently. She developed an interest in the archeology of the Southwest and went back to the University of Colorado to study anthropology. She earned a Master's degree and became a Research Associate and Curator Adjunct at the University of Colorado Museum. She became an expert on ceramics and published several scholarly articles. For her work, she was awarded an honorary degree, Doctor of Humane Letters, from the University of Colorado in 2007.

**Jason Chiupka (MA '08)** made the news with his excavations into "How genocide wiped out a Native American population". A massacre circa 800 A.D. southwest of Durango, Colorado prompted Chiupka to comment, "What we can learn from Sacred Ridge is that archaeological sites are not simply piles of rock and refuse, but that they were occupied by people that were involved in complex webs of social relations. Sacred Ridge is a case where social relations melted down and the solution chosen was absolute and shocking." See the report online at [http://www.msnbc.msn.com/id/39268873/ns/technology\\_and\\_science-science](http://www.msnbc.msn.com/id/39268873/ns/technology_and_science-science).

## Alum/Adjunct Faculty Inga Calvin Releases Maya Database

**Inga Calvin's** *Maya Hieroglyphics Study Guide* was featured on the season opener of "CSI: Miami." Although the dastardly serial killer wrote his message in Maya using disappearing ink, the brilliant CSI folks, with the aid of the Study Guide, were able to foil his plans.

**Inga Calvin** & Sandy Mielke, FAMSI web administrator, have posted Calvin's research and rollout photographs on the web: [http://research.famsi.org/rollouts/rollout\\_search.php](http://research.famsi.org/rollouts/rollout_search.php). This fully-searchable database integrates archaeological information with images in order to facilitate scholarship.



## KUDOS TO OUR GRADS

**Amy Harrison-Levine**, PhD student, has been awarded a total of \$17,500 to date (2009-2010) from Denver Zoo for her dissertation research regarding "The Human-Nonhuman Primate Interface in Ha Giang Province, Vietnam". Her research has two foci: first is an ethno-primatological investigation of resource overlap between humans and critically endangered Tonkin snub-nosed monkeys living in and around a limestone karst forest called Khu Ca. The second focus is a quasi-experimental assessment of the application of various conservation education programs in an effort to mitigate human resource use behaviors that threaten the survival of the Khu Ca snub-nosed monkey population. Currently, there are thought to be between 150-200 individual Tonkin snub-nosed monkeys left in the world, and the 90 individuals living in Khu Ca forest are the only known remaining viable population.

**Marni LaFleur** received a \$17,500 National Science Foundation Dissertation Improvement Award to carry out her research in Madagascar on: *Testing the Energy Conservation Hypothesis for Female Dominance in Wild Ring-tailed Lemurs with Implications for the Evolution of Lemur Traits*. Her advisor is Michelle Sauter. Marni is currently in the field and reports that it is baby season with lots of baby lemurs. Unfortunately the local large predator, the Fossa, is taking advantage of the little guys. Not to mention the ongoing political chaos.

**Guy Hepp** presented a paper at the Colorado Archaeological Society annual meeting in Gunnison, entitled: "The Material Culture of Incipient Social Complexity in Pacific Coastal Mesoamerica: The Ceramics of 'La Consentida'."

## Graduate Students with Research Focused in Latin America

**Baillie, Hal** MA Program

**Research Interests:** The construction sequence and development of the Rio Viejo Acropolis in conjuncture with the rise and dispersal of the Rio Viejo Polity in the lower Rio Verde Valley of Oaxaca, Mexico.

**Bender, Richard** MA Program

**Research Interests:** Nutritional anthropology and human biology in Colombia

**Dixon, Chris** PhD Program

**Research Interests:** Using the Cerén archaeological site in El Salvador to study Classic Period Maya agricultural practices.

**Fernandez, Esteban** MA Program

**Research Interests:** Post-classic period societies in Guerrero, Mexico

**Fischer, Kate** PhD Program

**Research Interests:** "Reframing the State: Social Welfare and Neoliberalization in Costa Rica's Orosi Valley."

**Forde, Jamie** PhD Program

**Research Interests:** Daily life and ideology at colonial Achiutla, Oaxaca, Mexico.

**Hedgepeth, Jessica** PhD Program

**Research Interests:** "Land Use Patterns in the Lower Rio Verde Valley, Oaxaca: Formative to Postclassic Shifts."

**Heindel, Theresa** MA Program

**Research Interest:** Maya society and lithic technology

**Hepp, Guy** PhD Program

**Research Interests:** Using the La Consentida archeological site in Mexico to investigate the sociocultural conditioning factors of an Early Formative period community in an area not previously known for Early Formative deposits

**Koukopoulos, Morgan** MA Program

**Research Interests:** Settlement patterns and spatial analysis in the Mexican State of Oaxaca

**Lattin, Malinda** MA Program

**Research Interests:** Human/women's rights in Guatemala

**Martínez Cervantes, Ruth** PhD Program

**Research Interests:** Different uses of manioc at the Joya de Ceren archeological site in El Salvador

**Mena, Meryleen** PhD Program

**Research Interests:** Cultural anthropology with a focus on ethnic Latin American identities, collective memory, political economy, and gender, particularly in Venezuela and Brazil

**Merriman, Dani** MA Program

**Research Interests:** Ceramics and Cultural Tourism in San Vicente, Costa Rica: The Cultural Heritage and Economics of an Ecomuseum Costa Rica

**Ofrias, Lindsay** MA Program

**Research Interests:** Impacts of oil-drilling in the Amazon region, particularly in Ecuador

**Scott, Jason** MA Program

**Research Interests:** Nationalist ideology, technology, and governance in Brazil

**Stephens, Philip** MA Program

**Research Interests:** Nutrition and sustainable agriculture in Colombia

**Williams, David** MA Program

**Research Interests:** Chipped stone analysis from the Lower Río Verde Valley, Oaxaca, Mexico.



*San Vicente de Nicoya, Costa Rica  
Maribel Sanchez Grijalba making tinajitas in the  
Ecomuseo de la Ceramica Chorotega  
Photo by Dani Merriman*