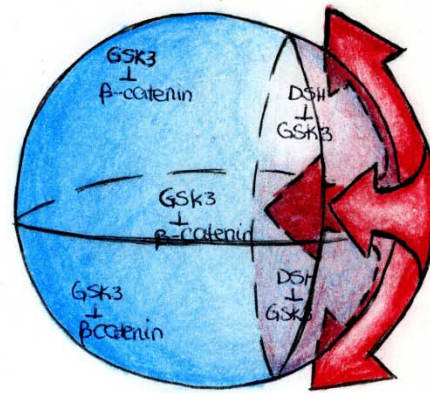
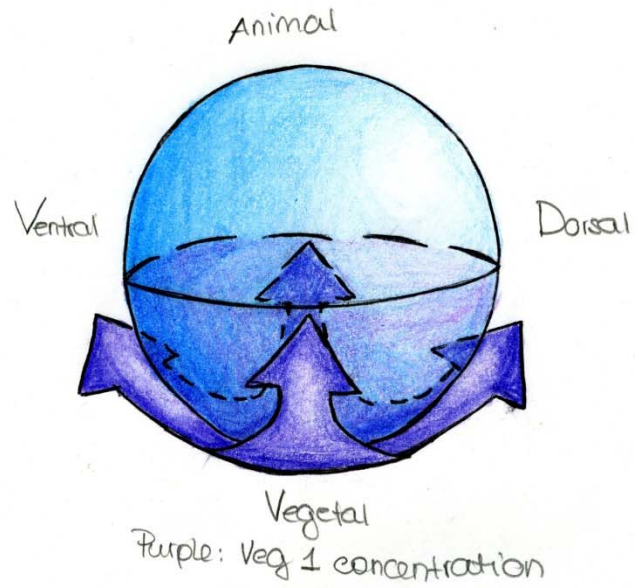
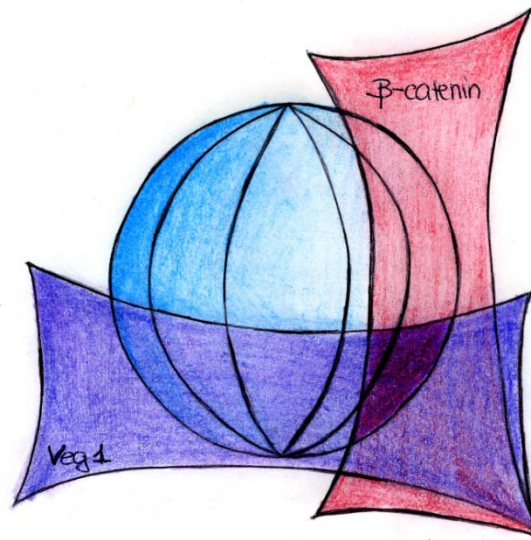
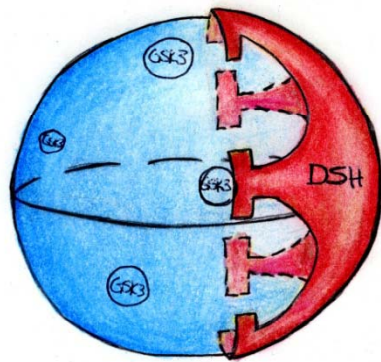


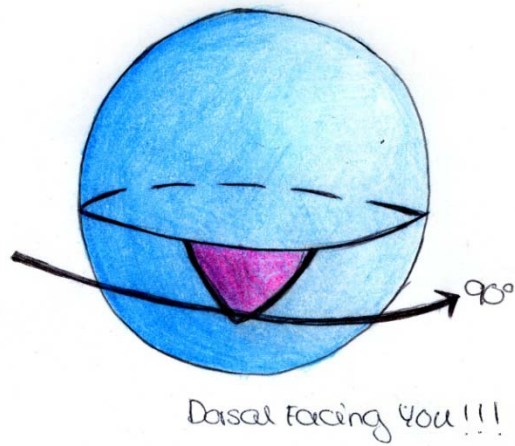
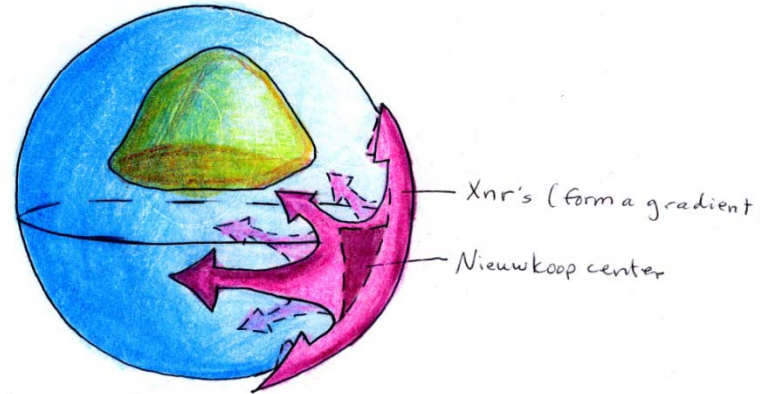
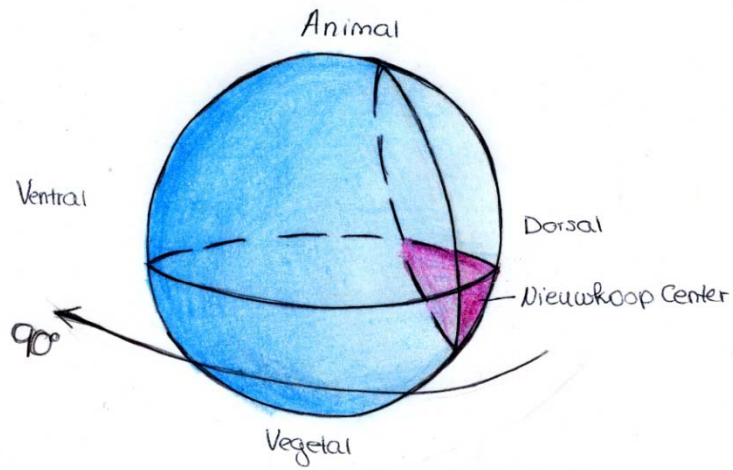
Axis formation and neurulation in amphibians

Drawings by Diana Venckunaite, 2009

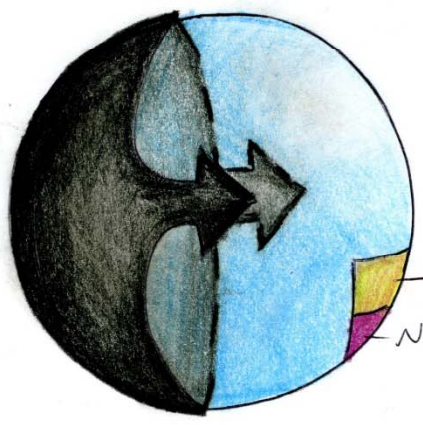




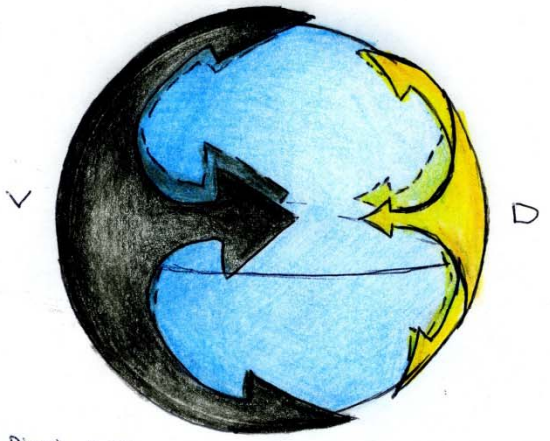
the overlap = Nieuwkoop Center



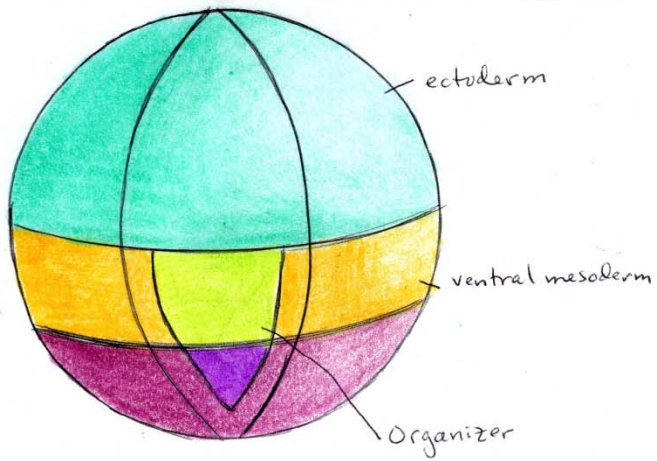
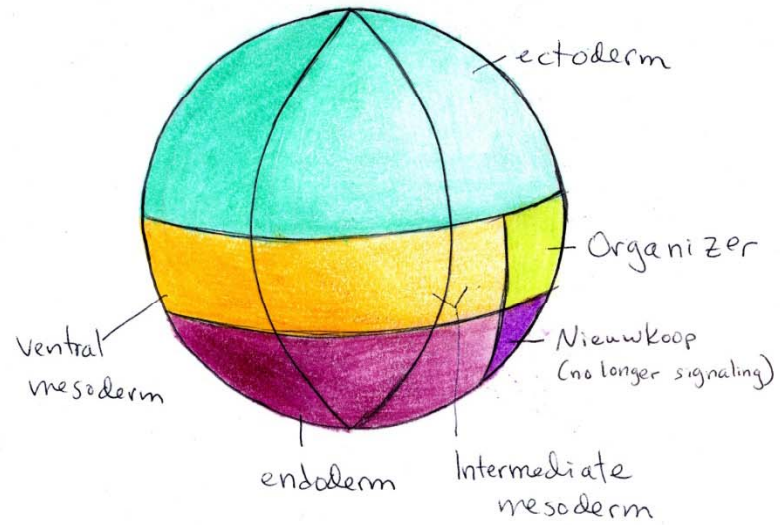
ventral
side
BMPs



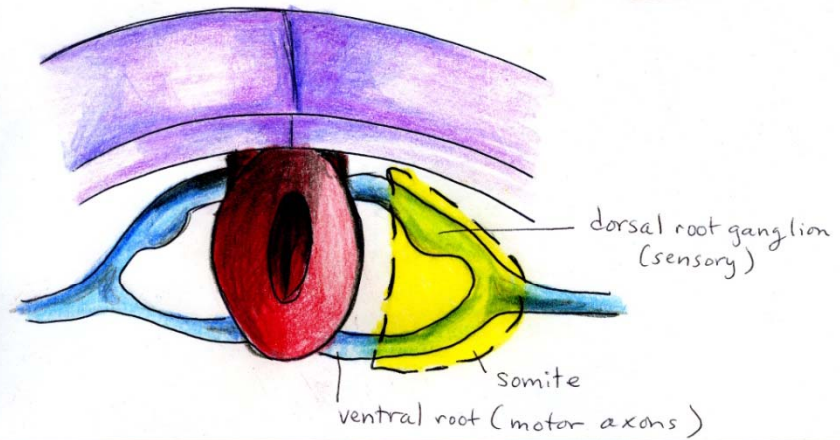
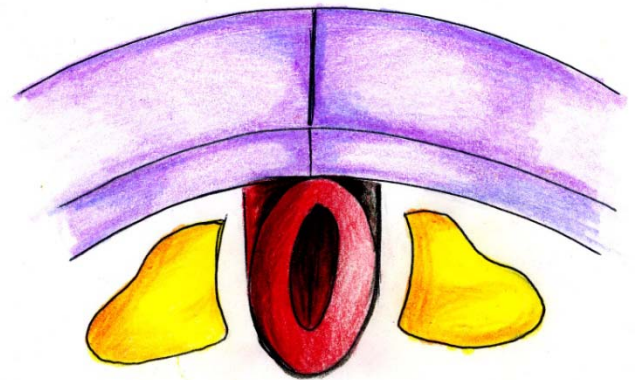
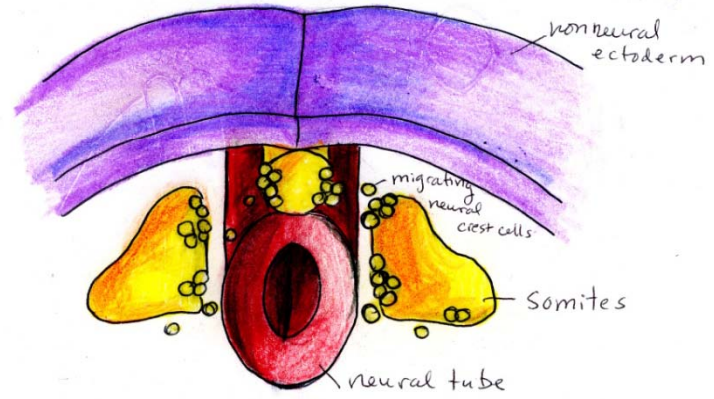
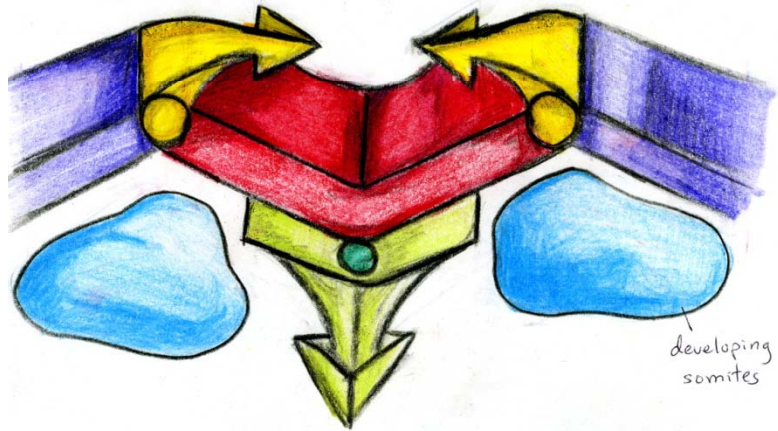
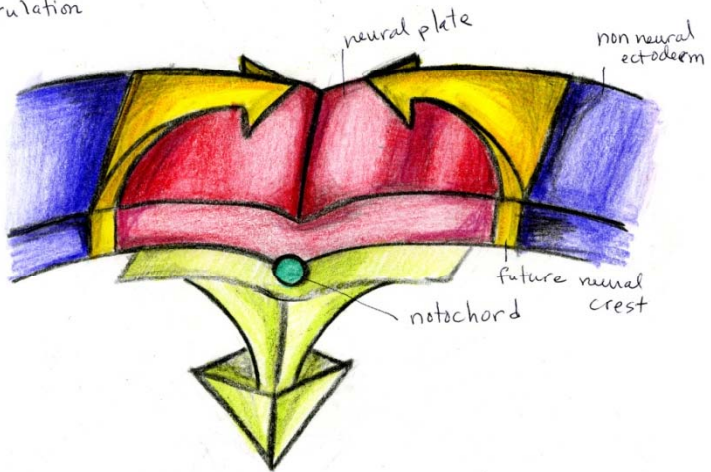
Organizer
Nieuwkoop
Center

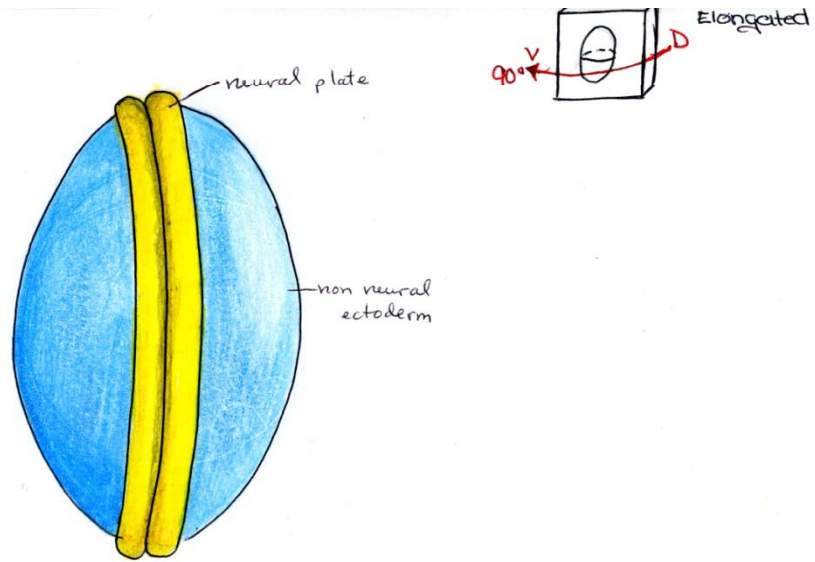


Black: BMP concentration
Yellow: Chordin, Noggin, Follistatin

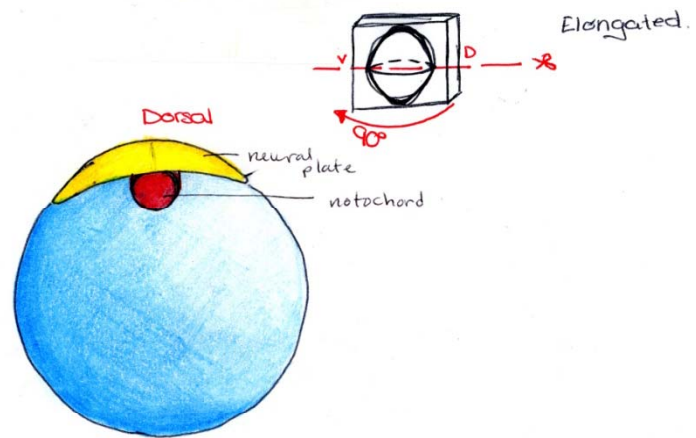


Neurulation





Dorsal view



Cross section