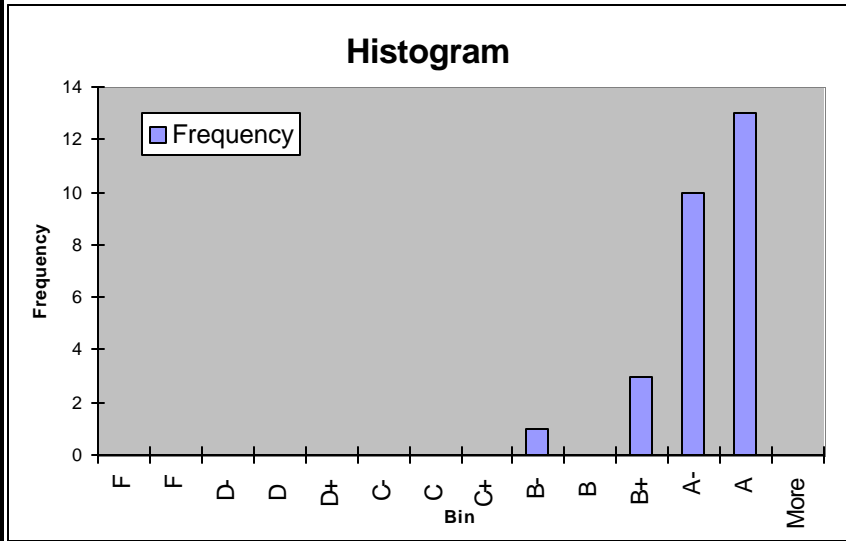


Final Grade	HW1 0.05	HW2 0.05	HW3 0.05	HW4 0.05	HW5 0.05	MID 0.25	FIN 0.25	PRO 0.25	Total 100%	Grade
F99										
7H1	100%	109%	106%	94%	100%	93%	100%	108%	100.7%	A
AGS	92%	100%	97%	69%	100%	94%	94%	103%	95.4%	A
AK9	97%	96%	75%	50%	100%	72%	91%	100%	86.7%	B+
AKL	100%	96%	106%	94%	100%	96%	99%	97%	97.9%	A
AS4	69%	76%	0%	69%	100%	83%	90%	83%	79.8%	B-
B88	100%	109%	100%	91%	100%	97%	90%	93%	95.0%	A
H67	100%	91%	103%	81%	100%	95%	97%	92%	94.8%	A-
HZ7	100%	96%	81%	75%	100%	77%	95%	89%	87.8%	B+
I3P	100%	109%	100%	94%	100%	93%	90%	94%	94.6%	A-
KA7	97%	109%	106%	88%	100%	92%	95%	92%	94.6%	A-
KJ9	100%	100%	103%	94%	100%	93%	98%	100%	97.5%	A
KSA	100%	93%	84%	63%	100%	95%	95%	94%	93.1%	A-
L43	94%	96%	95%	100%	100%	89%	96%	89%	92.6%	A-
L9Q	100%	100%	106%	100%	100%	98%	99%	100%	99.6%	A
LK1	72%	104%	106%	72%	100%	99%	95%	103%	96.9%	A
LK7	94%	93%	84%	59%	100%	80%	94%	86%	86.5%	B+
LKS	97%	109%	94%	103%	100%	92%	100%	94%	96.8%	A
OG3	81%	107%	94%	100%	100%	97%	100%	100%	98.2%	A
PB5	83%	93%	88%	100%	100%	84%	95%	89%	90.1%	A-
PG5	100%	96%	106%	100%	100%	96%	100%	100%	99.1%	A
PXK	97%	109%	103%	81%	100%	95%	99%	79%	92.9%	A-
TH3	92%	98%	97%	100%	100%	93%	100%	100%	97.5%	A
TH9	92%	93%	106%	103%	100%	96%	99%	93%	96.6%	A
U2X	100%	109%	106%	100%	100%	94%	98%	108%	100.8%	A
XVA	97%	109%	100%	91%	100%	91%	98%	100%	97.1%	A
YB2	92%	104%	97%	97%	100%	90%	96%	86%	92.3%	A-
ZB6	94%	100%	103%	88%	100%	96%	98%	79%	92.6%	A-
	94%	100%	94%	87%	100%	91%	96%	95%	94%	
	69%	76%	0%	50%	100%	72%	90%	79%	80%	
	100%	109%	106%	103%	100%	99%	100%	108%	101%	
	0%	0%	0%	0%	0%	0%	0%	0%	0%	

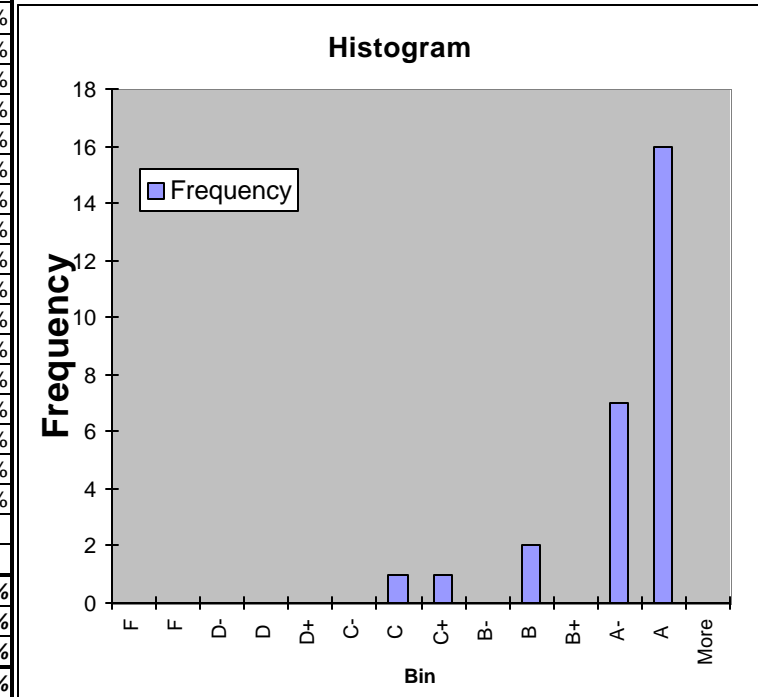
Bin	Frequency				
95.0 - 100.0	A	F	0%		
90.0 - 94.99	A-	F	45.00%	F	0
85.0 - 89.99	B+	D-	50.00%	F	0
80.0 - 84.99	B	D	55.00%	D-	0
75.0 - 79.99	B-	D+	60.00%	D	0
70.0 - 74.99	C+	C-	65.00%	D+	0
65.0 - 69.99	C	C	70.00%	C-	0
60.0 - 64.99	C-	C+	75.00%	C	0
55.0 - 59.99	D+	B-	80.00%	C+	0
50.0 - 54.99	D	B	85.00%	B-	1
45.0 - 49.99	D-	B+	90.00%	B	0
< 45.00	F	A-	95.00%	B+	3
		A	110.00%	A-	10
				A	13
				More	0



HW1 F99	1				2			3	4			5			Total 1-5	
	a	b	c	d	a	b	c	a	a	b	c	a	b	c		
	1	1	1	1	2	1	1	3	1	1	1	2	1	1	18.0	100%
7H1	1	1	1	1	2	1	1	3	1	1	1	2	1	1	18.0	100%
AGS	1	1	1	1	2	1	1	3	1	1	1	2	1	1	16.5	92%
AK9	1	1	1	1	2	1	1	3	1	1	1	2	1	1	17.5	97%
AKL	1	1	1	1	2	1	1	3	1	1	1	2	1	1	18.0	100%
AS4	1	1	1	1	1	1	1	0	1	1	1	1	1	1	12.5	69%
B88	1	1	1	1	2	1	1	3	1	1	1	2	1	1	18.0	100%
H67	1	1	1	1	2	1	1	3	1	1	1	2	1	1	18.0	100%
HZ7	1	1	1	1	2	1	1	3	1	1	1	2	1	1	18.0	100%
I3P	1	1	1	1	2	1	1	3	1	1	1	2	1	1	18.0	100%
KA7	1	1	1	1	2	1	1	3	1	1	1	2	1	1	17.5	97%
KJ9	1	1	1	1	2	1	1	3	1	1	1	2	1	1	18.0	100%
KSA	1	1	1	1	2	1	1	3	1	1	1	2	1	1	18.0	100%
L43	1	1	1	1	2	1	1	3	1	1	1	2	1	0	17.0	94%
L9Q	1	1	1	1	2	1	1	3	1	1	1	2	1	1	18.0	100%
LK1	1	1	1	1	0	0	1	3	0	0	1	2	1	1	13.0	72%
LK7	1	1	1	1	2	1	1	3	1	0	1	2	1	1	17.0	94%
LKS	1	1	1	1	2	1	1	3	1	1	1	2	1	1	17.5	97%
OG3	1	1	1	1	1	1	1	2	1	1	1	2	1	1	14.5	81%
PB5	1	1	1	1	2	1	1	3	1	1	1	0	1	1	15.0	83%
PG5	1	1	1	1	2	1	1	3	1	1	1	2	1	1	18.0	100%
PXK	1	1	1	1	2	1	1	3	1	1	1	2	1	1	17.5	97%
TH3	1	1	1	1	2	1	1	2	1	1	1	2	1	1	16.5	92%
TH9	1	1	1	1	2	0	1	3	1	1	1	2	1	1	16.5	92%
U2X	1	1	1	1	2	1	1	3	1	1	1	2	1	1	18.0	100%
XVA	1	1	1	1	2	1	1	3	1	1	1	2	1	1	17.5	97%
YB2	1	1	1	1	1	1	1	3	1	1	1	2	1	1	16.5	92%
ZB6	1	1	1	1	2	1	1	3	1	1	1	2	1	1	17.0	94%
	1	1	1	1	2	1	1	3	1	1	1	2	1	1	16.9	94%
	1	1	1	1	0	0	1	0	0	0	1	0	1	0	12.5	69%
	1	1	1	1	2	1	1	3	1	1	1	2	1	1	18.0	100%
	1	1	1	1	2	1	1	3	1	1	1	2	1	1	18.0	100%

F	0%
F	45.00%
D-	50.00%
D	55.00%
D+	60.00%
C-	65.00%
C	70.00%
C+	75.00%
B-	80.00%
B	85.00%
B+	90.00%
A-	95.00%
A	110.00%

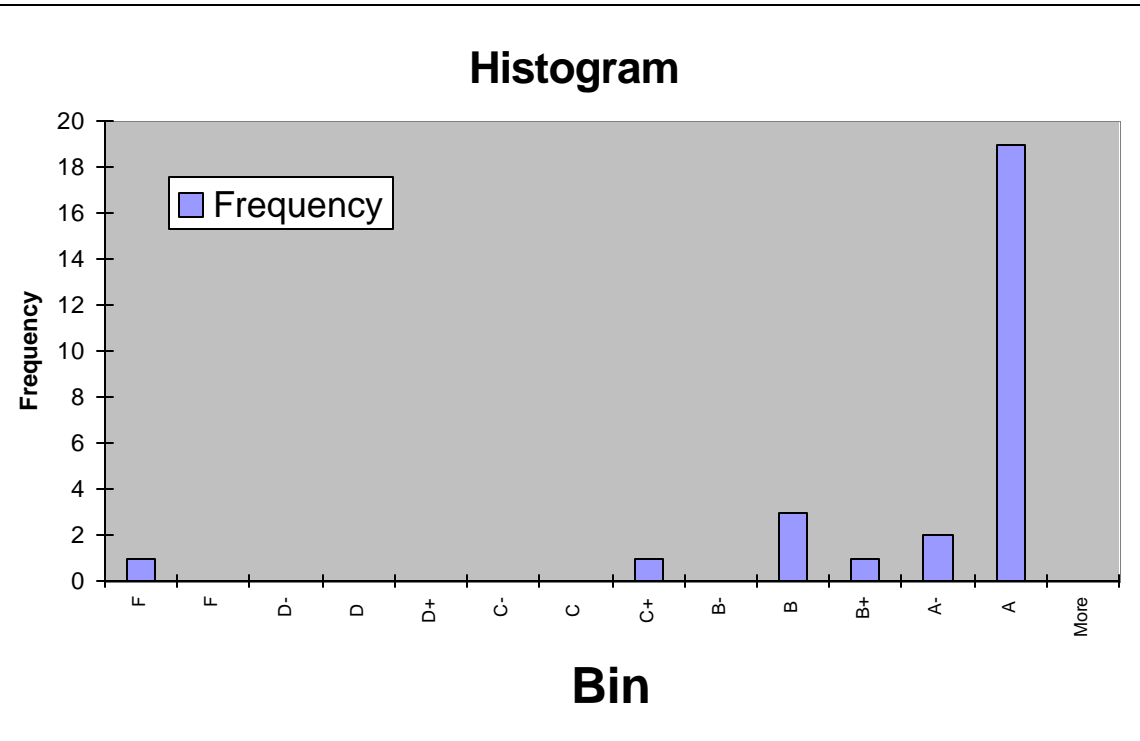
Bin	Frequency
F	0
F	0
D-	0
D	0
D+	0
C-	0
C	1
C+	1
B-	0
B	2
B+	0
A-	7
A	16



HW3	1	2	Total	
F99	Homework 3			
	14	20	34.0	106%
7H1	14	20	34.0	106%
AGS	14	17	31.0	97%
AK9	9	15	24.0	75%
AKL	14	20	34.0	106%
AS4	--	--	0.0	0%
B88	14	18	32.0	100%
H67	13	20	33.0	103%
HZ7	11	15	26.0	81%
I3P	14	18	32.0	100%
KA7	14	20	34.0	106%
KJ9	13	20	33.0	103%
KSA	11	16	27.0	84%
L43	10.5	20	30.5	95%
L9Q	14	20	34.0	106%
LK1	14	20	34.0	106%
LK7	12	15	27.0	84%
LKS	14	16	30.0	94%
OG3	14	16	30.0	94%
PB5	12	16	28.0	88%
PG5	14	20	34.0	106%
PXK	13	20	33.0	103%
TH3	14	17	31.0	97%
TH9	14	20	34.0	106%
U2X	14	20	34.0	106%
XVA	12	20	32.0	100%
YB2	14	17	31.0	97%
ZB6	13	20	33.0	103%
	13.06	18.31	30.2	94%
	9.00	15.00	0.0	0%
	14.00	20.00	34.0	106%
	14.00	20.00	34.0	106%

F	0%
F	45.00%
D-	50.00%
D	55.00%
D+	60.00%
C-	65.00%
C	70.00%
C+	75.00%
B-	80.00%
B	85.00%
B+	90.00%
A-	95.00%
A	110.00%

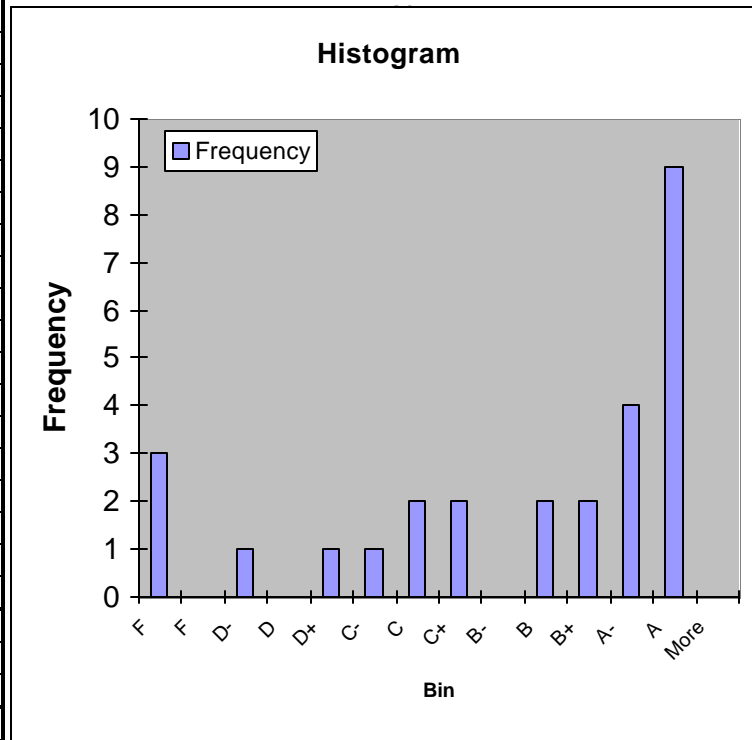
Bin	Frequency
F	1
F	0
D-	0
D	0
D+	0
C-	0
C	0
C+	1
B-	0
B	3
B+	1
A-	2
A	19



HW4 F99	1 Homework 4	2	3	Total	
	8	12	12	32.0	100%
7H1	8	10	12	30.0	94%
AGS	5	6	11	22.0	69%
AK9	6	5	5	16.0	50%
AKL	9	9	12	30.0	94%
AS4	8	12	2	22.0	69%
B88	8	9	12	29.0	91%
H67	7	8	11	26.0	81%
HZ7	6	6	12	24.0	75%
I3P	8	10	12	30.0	94%
KA7	7	9	12	28.0	88%
KJ9	6	12	12	30.0	94%
KSA	7	5	8	20.0	63%
L43	8	12	12	32.0	100%
L9Q	8	12	12	32.0	100%
LK1	6	7	10	23.0	72%
LK7	6	5	8	19.0	59%
LKS	9	12	12	33.0	103%
OG3	8	12	12	32.0	100%
PB5	9	10	13	32.0	100%
PG5	8	12	12	32.0	100%
PXK	7	7	12	26.0	81%
TH3	8	12	12	32.0	100%
TH9	9	12	12	33.0	103%
U2X	8	12	12	32.0	100%
XVA	9	8	12	29.0	91%
YB2	7	12	12	31.0	97%
ZB6	7	9	12	28.0	88%
	7.48	9.44	10.96	27.9	87%
	5.00	5.00	2.00	16.0	50%
	9.00	12.00	13.00	33.0	103%
	8.00	12.00	12.00	32.0	100%

F	0%
F	45.00%
D-	50.00%
D	55.00%
D+	60.00%
C-	65.00%
C	70.00%
C+	75.00%
B-	80.00%
B	85.00%
B+	90.00%
A-	95.00%
A	110.00%

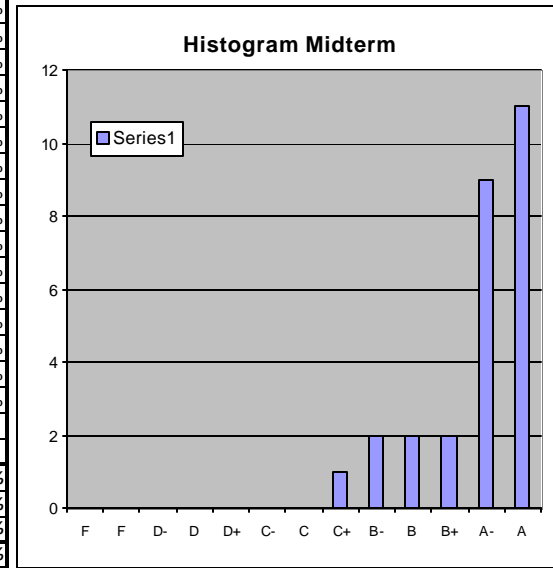
Bin	Frequency
F	3
F	0
D-	1
D	0
D+	1
C-	1
C	2
C+	2
B-	0
B	2
B+	2
A-	4
A	9



HW5 F99	1	2	Total	
	Homework 5			
	1	1	2.0	100%
7H1	1	1	2.0	100%
AGS	1	1	2.0	100%
AK9	1	1	2.0	100%
AKL	1	1	2.0	100%
AS4	1	1	2.0	100%
B88	1	1	2.0	100%
H67	1	1	2.0	100%
HZ7	1	1	2.0	100%
I3P	1	1	2.0	100%
KA7	1	1	2.0	100%
KJ9	1	1	2.0	100%
KSA	1	1	2.0	100%
L43	1	1	2.0	100%
L9Q	1	1	2.0	100%
LK1	1	1	2.0	100%
LK7	1	1	2.0	100%
LKS	1	1	2.0	100%
OG3	1	1	2.0	100%
PB5	1	1	2.0	100%
PG5	1	1	2.0	100%
PXK	1	1	2.0	100%
TH3	1	1	2.0	100%
TH9	1	1	2.0	100%
U2X	1	1	2.0	100%
XVA	1	1	2.0	100%
YB2	1	1	2.0	100%
ZB6	1	1	2.0	100%
	1.00	1.00	2.0	100%
	1.00	1.00	2.0	100%
	1.00	1.00	2.0	100%
	1.00	1.00	2.0	100%

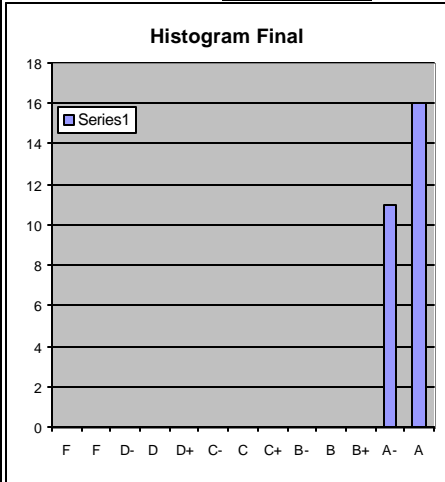
Midterm F99	1	2	3	3														Total						
Midte	1	2	3	3	4	5	6a	6b	7	8	9	10	11	12	13	14	15	16	17					
	10	2	1	2	3	2	3	2	2	2	2	2	2	2	2	2	2	2	1	4	54.5	100%		
7H1	10	2	1	2	2	2	3	2	2	2	2	2	2	1	2	2	2	1	1	4	50.6	93%		
AGS	10	2	1	2	3	2	3	2	2	2	2	1	2	2	2	2	2	1	4	51.1	94%			
AK9	5	2	1	2	0	2	3	2	2	2	2	2	1	2	2	1	1	1	1	4	39.1	72%		
AKL	10	2	1	2	3	2	3	2	2	2	2	2	2	2	2	2	1	2	1	4	52.5	96%		
AS4	10	2	1	0	3	2	3	2	2	2	2	2	1	2	2	1	2	1	1	2	45.0	83%		
B88	10	2	1	2	2	2	3	2	2	2	3	2	2	2	2	1	2	2	2	4	52.6	97%		
H67	10	2	1	2	3	2	3	2	2	2	3	2	2	2	2	1	2	1	2	4	52.0	95%		
HZ7	10	2	1	0	0	2	3	2	2	2	2	1	2	2	2	2	2	1	1	0	3	42.1	77%	
I3P	10	2	1	2	2	2	3	2	2	2	3	2	1	2	2	1	2	2	2	4	50.8	93%		
KA7	10	2	1	2	2	2	3	2	2	2	3	2	2	2	2	1	1	2	2	1	4	50.1	92%	
KJ9	10	2	1	2	3	2	2	2	1	2	3	2	2	2	2	1	2	2	1	2	50.5	93%		
KSA	10	2	1	1	2	2	3	2	2	2	3	2	2	2	2	2	2	2	2	4	51.8	95%		
L43	7.5	2	1	1	2	2	3	2	2	2	2	2	2	2	2	2	2	2	1	4	48.3	89%		
L9Q	10	2	1	2	3	2	3	2	2	2	3	2	2	2	2	1	2	2	2	4	53.5	98%		
LK1	10	2	1	2	3	2	3	2	2	2	3	2	2	2	2	2	2	2	1	4	54.1	99%		
LK7	10	2	1	0	2	2	3	2	2	2	3	1	1	2	2	2	2	1	2	1	3	43.5	80%	
LKS	10	2	1	2	2	2	3	2	2	2	3	2	2	2	2	2	0	2	2	4	50.3	92%		
OG3	10	2	1	2	3	2	3	2	2	2	2	2	2	2	2	2	2	2	1	4	52.6	97%		
PB5	10	2	1	2	3	2	3	2	2	2	2	1	1	2	2	2	1	2	1	4	45.8	84%		
PG5	10	2	1	2	3	1	3	2	2	2	3	2	2	2	2	2	2	1	2	4	52.3	96%		
PXK	10	2	1	2	3	2	3	2	2	2	2	2	2	2	2	2	2	2	1	4	52.0	95%		
TH3	10	2	1	2	3	1	3	2	2	2	2	2	2	2	2	2	2	2	1	4	50.6	93%		
TH9	10	2	1	2	3	2	3	2	2	2	3	2	2	2	2	2	1	2	2	4	52.1	96%		
U2X	10	2	1	2	2	2	3	2	2	2	3	2	1	2	2	1	2	2	2	4	51.3	94%		
XVA	10	2	1	2	2	2	3	2	2	2	2	2	2	2	1	1	2	2	1	4	49.8	91%		
YB2	10	2	1	2	2	2	3	2	2	2	3	1	2	1	2	1	1	2	2	4	48.8	90%		
ZB6	10	2	1	2	3	2	2	2	2	3	2	2	2	2	2	2	2	2	1	4	52.5	96%		
	9.72	2.00	1.00	1.69	2.37	1.89	2.93	1.98	1.96	1.98	2.59	1.74	1.69	1.94	1.96	1.24	1.70	1.70	1.67	1.65	0.80	3.64	49.8	91%
	5.00	2.00	1.00	0.00	0.00	1.00	2.00	1.50	1.00	1.50	2.00	0.50	0.50	1.00	1.50	0.50	0.00	1.00	0.50	0.50	0.00	2.00	39.1	72%
	10.00	2.00	1.00	2.00	3.00	2.00	3.00	2.00	2.00	2.00	3.00	2.00	2.00	2.00	1.50	2.00	2.00	2.00	2.00	1.00	4.00	54.1	99%	
	10.00	2.00	1.00	2.00	3.00	2.00	3.00	2.00	2.00	2.00	3.00	2.00	2.00	2.00	1.50	2.00	2.00	2.00	2.00	1.00	4.00	54.5	100%	

		Bin	Frequency
F	0%	F	0
F	45.00%	F	0
D-	50.00%	D-	0
D	55.00%	D-	0
D+	60.00%	D	0
C-	65.00%	D+	0
C	70.00%	C-	0
C+	75.00%	C	0
B-	80.00%	C+	1
B	85.00%	B-	2
B+	90.00%	B	2
A-	95.00%	B+	2
A	110.00%	A-	9
		A	11
		More	0



Final Exam	1	2	3	4	5	6	7	8	9	10	11	Total		
	4	4	4	4	3	4	4	2	4	2	4	4	94.0	100%
7H1	4	4	4	4	3	4	4	2	4	2	4	4	94.0	100%
AGS	4	3	4	4	3	4	3	1	4	2	4	4	88.0	94%
AK9	3	4	4	4	3	4	4	2	4	2	4	4	86.0	91%
AKL	4	4	4	4	3	4	4	2	4	2	4	4	93.0	99%
AS4	2	4	4	4	3	4	4	2	4	2	3	4	85.0	90%
B88	4	4	4	4	3	4	4	2	4	2	3	4	85.0	90%
H67	3	3	4	4	3	4	4	2	4	2	4	4	91.0	97%
HZ7	4	4	4	4	3	4	4	2	4	2	3	4	89.0	95%
I3P	4	4	4	4	3	4	4	2	4	2	4	4	85.0	90%
KA7	4	3	4	4	3	4	4	2	4	2	4	4	89.0	95%
KJ9	4	4	4	4	3	4	4	2	4	2	4	4	92.0	98%
KSA	4	4	4	4	3	4	4	2	4	2	3	4	89.0	95%
L43	4	4	4	4	3	4	4	2	4	2	4	4	90.0	96%
L9Q	4	4	4	4	3	4	4	2	4	2	4	4	93.0	99%
LK1	4	4	4	4	3	4	4	2	4	2	4	4	89.0	95%
LK7	4	4	4	4	3	4	4	2	4	2	3	4	88.0	94%
LKS	4	4	4	4	3	4	4	2	4	2	4	4	94.0	100%
OG3	4	4	4	4	3	4	4	2	4	2	4	4	94.0	100%
PB5	4	4	4	4	3	4	4	2	4	2	4	4	89.0	95%
PG5	4	4	4	4	3	4	4	2	4	2	4	4	94.0	100%
PXK	4	4	4	4	3	4	4	2	4	2	4	4	93.0	99%
TH3	4	4	4	4	3	4	4	2	4	2	4	4	94.0	100%
TH9	4	4	4	4	3	4	4	2	4	2	4	4	93.0	99%
U2X	4	4	4	4	3	4	4	2	4	2	4	4	92.0	98%
XVA	3	4	4	4	3	4	4	2	4	2	4	4	92.0	98%
YB2	4	4	4	4	3	4	4	2	4	2	4	4	90.0	96%
ZB6	4	4	4	4	3	4	4	1	4	2	4	4	92.0	98%
	###	###	###	###	###	###	###	###	###	###	###	###	90.5	96%
	###	###	###	###	###	###	###	###	###	###	###	###	85.0	90%
	###	###	###	###	###	###	###	###	###	###	###	###	94.0	100%
	###	###	###	###	###	###	###	###	###	###	###	###	94.0	100%

Bin	Frequency
F	0%
F	45.00%
D-	50.00%
D	55.00%
D+	60.00%
C-	65.00%
C	70.00%
C+	75.00%
B-	80.00%
B	85.00%
B+	90.00%
A-	95.00%
A	110.00%
More	0



Project	1	2	3	4	5	6	7	8	9	Total	
F99	oral	st-qual	st-graph	problem	ration	backg	rules	summ	Ref		
	4	4	4	4	4	4	4	4	4	36.0	100%
7H1	4	5	5	4	4	4	4	4	5	39.0	108%
AGS	4	4	4	4	4	4	5	4	4	37.0	103%
AK9	4	4	4	4	4	4	4	4	4	36.0	100%
AKL	4	4	4	4	4	4	4	4	3	35.0	97%
AS4	4	4	3	3	4	3	3	3	3	30.0	83%
B88	3.5	4	4	4	4	3	3	4	4	33.5	93%
H67	3.5	4	4	3.5	4	4	3	4	3	33.0	92%
HZ7	4	4	4	3	4	3	3	4	3	32.0	89%
I3P	4	4	4	4	4	3	3	4	4	34.0	94%
KA7	4	4	5	4	4	4	4	4	0	33.0	92%
KJ9	4	4	4	4	4	4	4	4	4	36.0	100%
KSA	4	4	4	4	4	4	3	4	3	34.0	94%
L43	4	4	4	3	3	4	3	3	4	32.0	89%
L9Q	4	4	4	4	4	4	4	4	4	36.0	100%
LK1	4	4	4	4	4	4	5	4	4	37.0	103%
LK7	2	4	4	4	4	3	4	3	3	31.0	86%
LKS	4	4	4	4	4	4	3	4	3	34.0	94%
OG3	3	4	4	4	4	4	4	4	5	36.0	100%
PB5	4	4	4	4	4	4	4	4	0	32.0	89%
PG5	4	4	4	4	4	4	4	4	4	36.0	100%
PXK	3.5	3	3	3	4	3	3	3	3	28.5	79%
TH3	4	4	4	4	4	4	4	4	4	36.0	100%
TH9	3.5	4	4	4	3	3	4	4	4	33.5	93%
U2X	4	4	5	4	5	4	4	4	5	39.0	108%
XVA	4	4	5	4	5	4	4	3	3	36.0	100%
YB2	4	3	3	4	4	3	3	4	3	31.0	86%
ZB6	3.5	3	3	3	4	3	3	3	3	28.5	79%
	3.80	3.93	4.00	3.80	4.00	3.67	3.67	3.78	3.41	34.0	95%
	2.00	3.00	3.00	3.00	3.00	3.00	3.00	3.00	0.00	28.5	79%
	4.00	5.00	5.00	4.00	5.00	4.00	5.00	4.00	5.00	39.0	108%
	4.00	4.00	4.00	4.00	4.00	4.00	4.00	4.00	4.00	36.0	100%

F	0%
F	45.00%
D-	50.00%
D	55.00%
D+	60.00%
C-	65.00%
C	70.00%
C+	75.00%
B-	80.00%
B	85.00%
B+	90.00%
A-	95.00%
A	110.00%

Bin	Frequency
F	0
F	0
D-	0
D	0
D+	0
C-	0
C	0
C+	0
B-	0
B	2
B+	1
A-	5
A	7
More	0

